



creatif

**Solo**

Acoustic Operable Moving Walls

[www.creatif.org.uk](http://www.creatif.org.uk)

## 02\_Solo Acoustic Moving Walls

Solo is the ultimate in terms of acoustic integrity, achieving the very highest possible sound ratings.

Both our Twin Point and Single Point systems glide along a recessed or surface-mounted ceiling track, leaving the floor free of any track or obstruction.

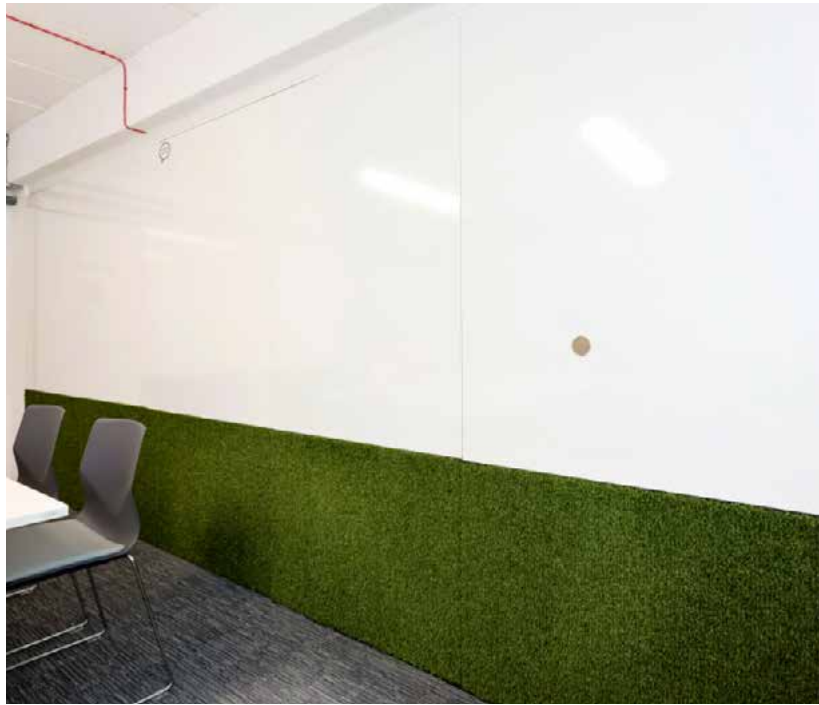
Complex track layouts can be specified for unlimited room configuration options, and an almost unlimited plethora of finishes provides endless design opportunities. Available in manual and semi-auto electrically operated versions.

## Contents:

<b>Page 03-04</b>	Gallery
<b>Page 05-09</b>	Mellow Acoustic Polyester
<b>Page 10-11</b>	Moss & Foliage
<b>Page 12-13</b>	Charred Timber
<b>Page 14-15</b>	Natural Bark
<b>Page 16-21</b>	ReSound Acoustic Panels
<b>Page 22-23</b>	MFC
<b>Page 24-25</b>	Writable Surfaces
<b>Page 26-27</b>	Antibacterial Surfaces
<b>Page 28-29</b>	Other Finishes
<b>Page 30-34</b>	Product Technical Information
<b>Page 35</b>	Contact







## Mellow Acoustic Polyester

Mellow is incredibly versatile, making it an ideal base material for several workspace solutions - such as adding a fantastic finish to our moving walls.



## 06\_Mellow Design Options

In addition to its wide range of colours, Mellow is also available in 12mm and 24mm thickness and can be cut with ease making it an ideal material for creating custom designs.

In addition to cutting, Mellow can be layered and fixed securley for further design flexibility.



### Cut Out Shapes & Patterns

Using precision cutting methods, we are able to cut just about any shape or pattern you can think of!



### Groove Patterns

Create stunning lines and patterns using our 'Groove' cutting.

# 07\_Mellow Polyester Colours

Mellow comes in a range of colours, please contact us for a physical sample.



Charcoal Grey



Stone Grey



Light Grey



Dark Blue



Navy



Light Blue



Cyan



Orange



Yellow



Black



White



Ivory



Red



Purple



Green



Smoke Grey  
24mm thick only



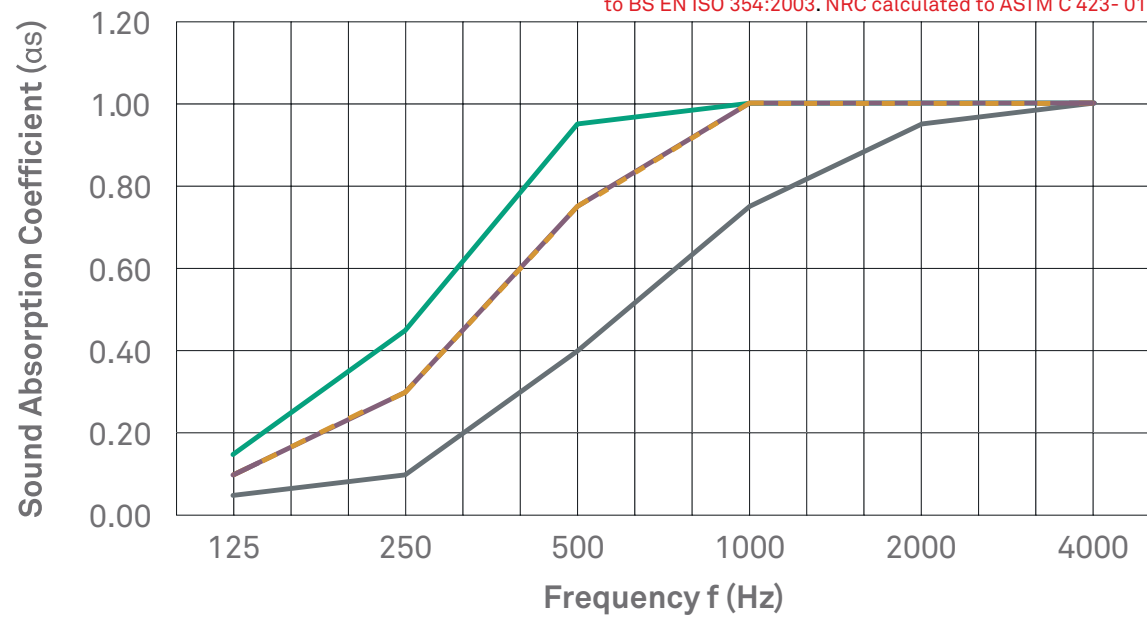
Pink  
24mm thick only

## 08\_Mellow Acoustic Info

Mellow is specifically designed to reduce and control reverberated (echo) noise in building interiors.

Minimum Noise Reduction Coefficient 0.55.

The Laboratory Measurement of Random Incidence Sound Absorption to BS EN ISO 354:2003. NRC calculated to ASTM C 423- 01.



Frequency (Hz)1	25	2505	00	1000	2000	4000N	RC
12mm Mellow	0.05	0.10	0.40	0.75	0.95	1.00	0.55
12mm Mellow (Air Gap)	0.10	0.30	0.75	1.00	1.00	1.00	0.75
24mm Mellow	0.10	0.30	0.75	1.00	1.00	1.00	0.75
24mm Mellow (Air Gap)	0.15	0.45	0.95	1.00	1.00	1.00	0.85



## 09\_Mellow Product Info

Mellow is manufactured from 100% polyester fibres and does not contain formaldehyde binders. Creatif polyester fibres support safer indoor air quality and will not become a potential airborne pollutant.

Uncontaminated Mellow can be recycled.

### Material Information

#### **Composition**

100% Polyester Fibre (PET)

#### **Thickness**

12mm + 24mm

#### **Panel Dimensions**

1200mm x 2400mm (+5mm) (+10mm)

#### **Weight**

2400gsm 4800gsm

#### **Density**

200kg/m<sup>3</sup>

#### **Impact Resistance**

Mellow has been tested for impact resistance to N13964:2004 and meets the criteria of Class 1A; not adversely affected at impact velocities over 16.5m/s.

#### **VOC Emissions**

Creatif polyester has been tested by Cetec Pty Ltd (Report: CV080408) for chemical emission and is classified as low VOC. VOC concentration: 0.01 mg/m<sup>3</sup>

#### **Moisture Absorption**

Polyester fibre when exposed to an atmosphere of 50°C at 90% relative humidity for four days showed moisture absorption of less than 0.03% by weight. Polyester not affected by moisture, mould or mildew and will not rot or deteriorate in intended use.

### **Environmental**

Creatif is committed to best practice through our ISO 9001 and ISO 14001 certified Quality and Environmental Management Systems. Mellow products contains a minimum of 65% previously recycled polyester fibre (from PET bottle-flake) ensuring comparatively low embodied energy Off-cuts and manufacturing waste is re-used or recycled wherever possible.

### **Fire Ratings (Conducted on 12mm Mellow)**

#### **ISO 9705: 1993**

Classification: Group 1-S  
Smoke Production Rate: <5.0m<sup>2</sup>/s  
As required by NZBC C/VM2

#### **AS ISO 9705 - 2003**

Classification: Group 1  
(SMOGR<sub>Arc</sub>): <100m<sup>2</sup>/s<sup>2</sup>  
As required by BCA C1.10  
FI 4974 dated 16th September, 2012  
EN13501-1:2007+A1:2009  
B - s2, d2  
WF 336911 dated 25th February, 2014

#### **ASTM E-84-14**

Class A, FS:0 - SD:45  
RJ4479-2 dated 25th January, 2015  
Thermal Performance  
Mellow 12mm R0.41 (@15°C)  
Mellow 24mm R0.82 (@15°C)



## Moss & Foliage

Bring the outside in with our wide range of moss and foliage finishes, without the hassle of watering!



## 11\_Moss & Foliage Options

All of our moss and foliage is 100% real, and thanks to being treated needs no watering, sunlight or maintenance and will stay fresh and soft to the touch long into the future... Making it a perfect alternative to a traditional living wall.



Lowland Moss



Raindeer Moss Light Green



Raindeer Moss Mid Green



Raindeer Moss Dark Green



Raindeer Moss Charcoal



Raindeer Moss Natural



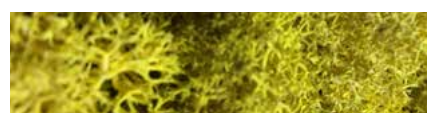
Raindeer Moss Pink



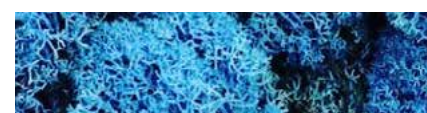
Raindeer Moss Purple



Raindeer Moss Brown



Raindeer Moss Yellow



Raindeer Moss Blue



Bun Moss Light Green



Bun Moss Mid Green



Bun Moss Dark Green



Ivy



Jungle Foliage



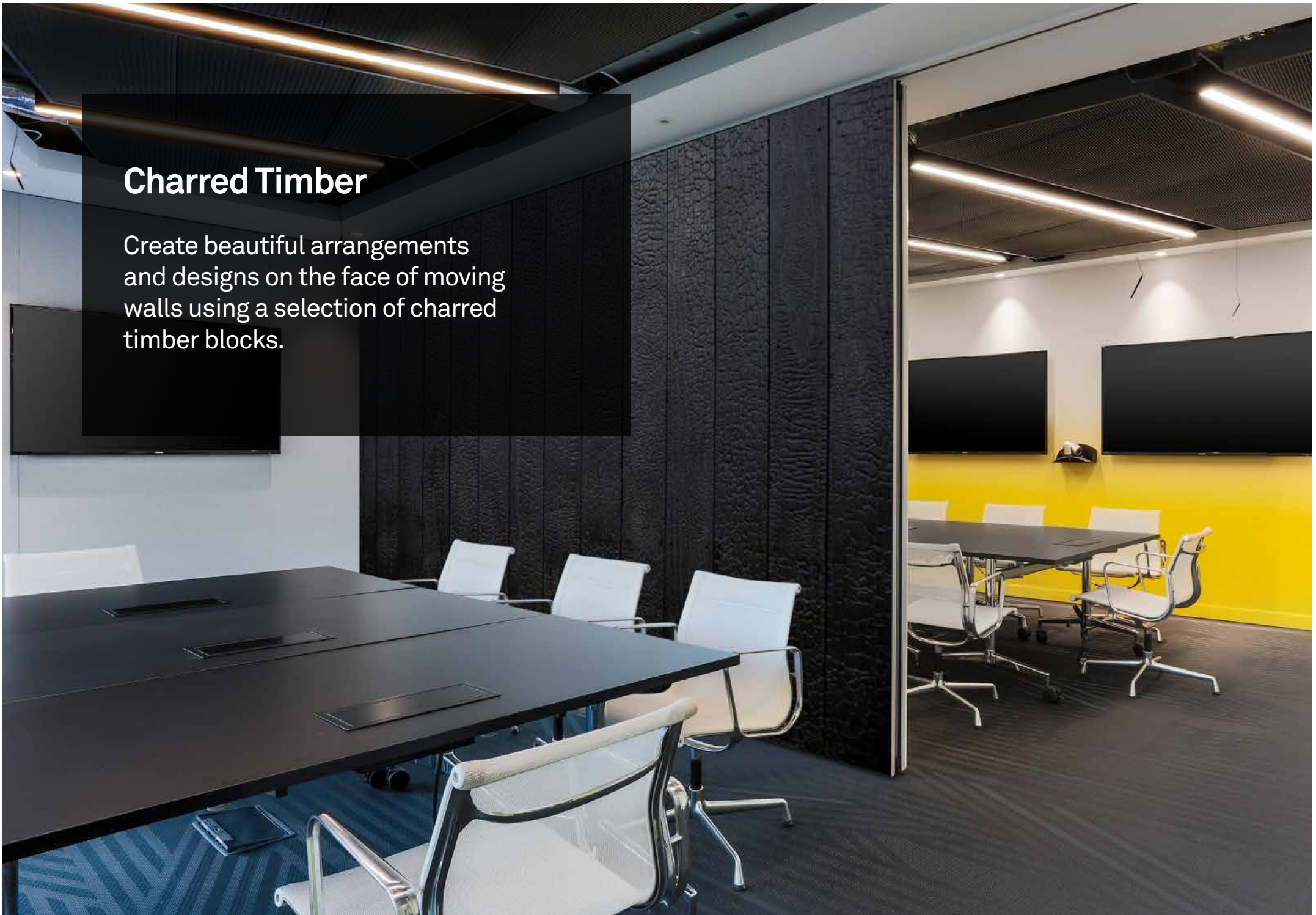
Jungle Foliage & Yellow Flowers



Jungle Foliage & Pink Flowers

## Charred Timber

Create beautiful arrangements and designs on the face of moving walls using a selection of charred timber blocks.



## 13\_Charred Timber Options

Our beautifully unique charred timber pieces are created by “Yakisugi” - the ancient Japanese craft of conserving timber through the charring of its surface with flame. Rather than being painted, the timber is darkened to one of five levels.



Level 1



Level 2



Level 3



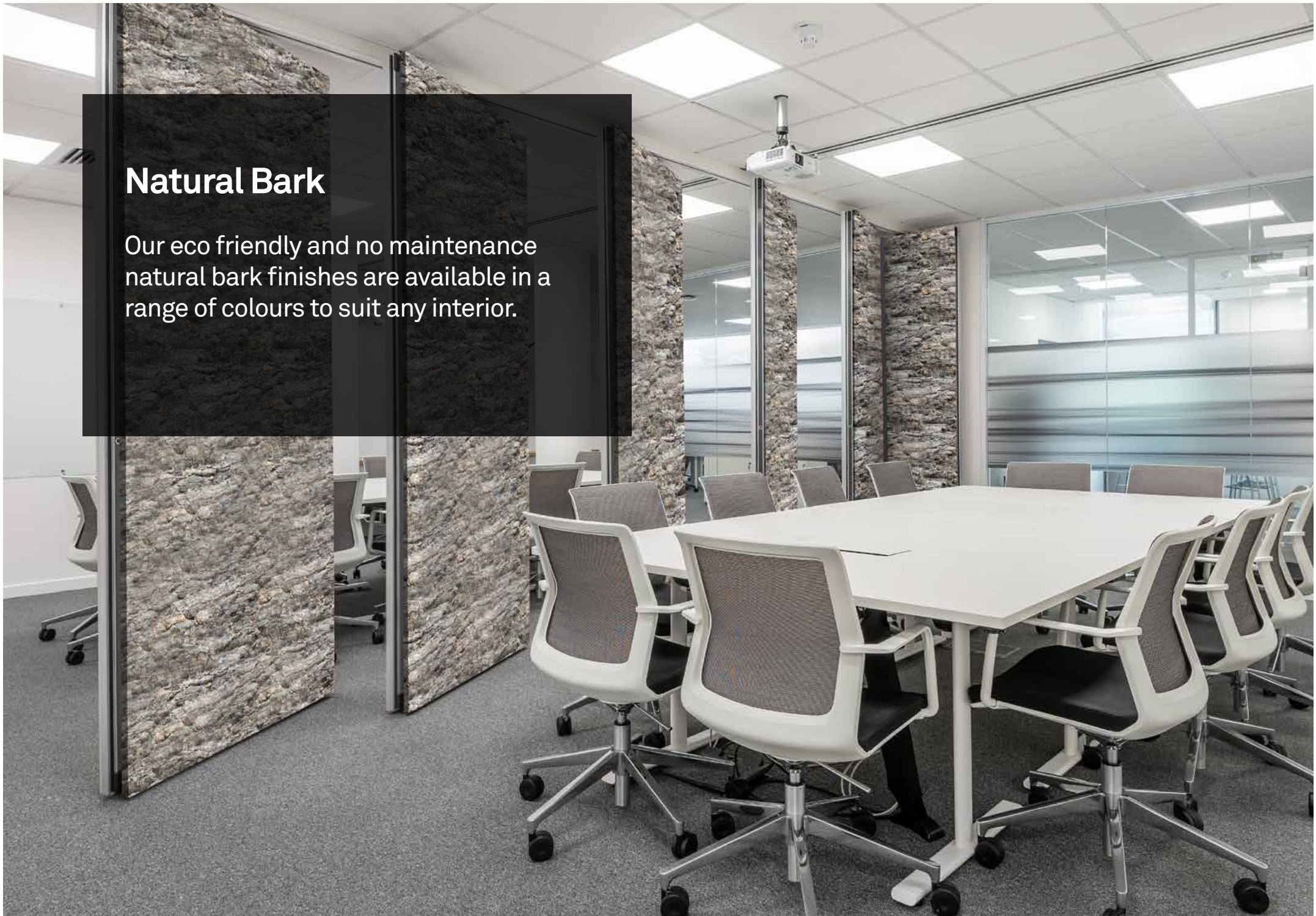
Level 4



Level 5

## Natural Bark

Our eco friendly and no maintenance natural bark finishes are available in a range of colours to suit any interior.



# 15\_Natural Bark

Our stunning natural bark finishes are carefully crafted by hand, with three bark styles to choose, each of which are available in a selection of colours.

## Types of Bark



Birch



Cork



Poplar

## Colour Options



Black



Coral



Blue



Dark Green



Dark Grey



Gold



Light Blue



Light Green



Light Grey



Mid Grey



Pink



Red



White

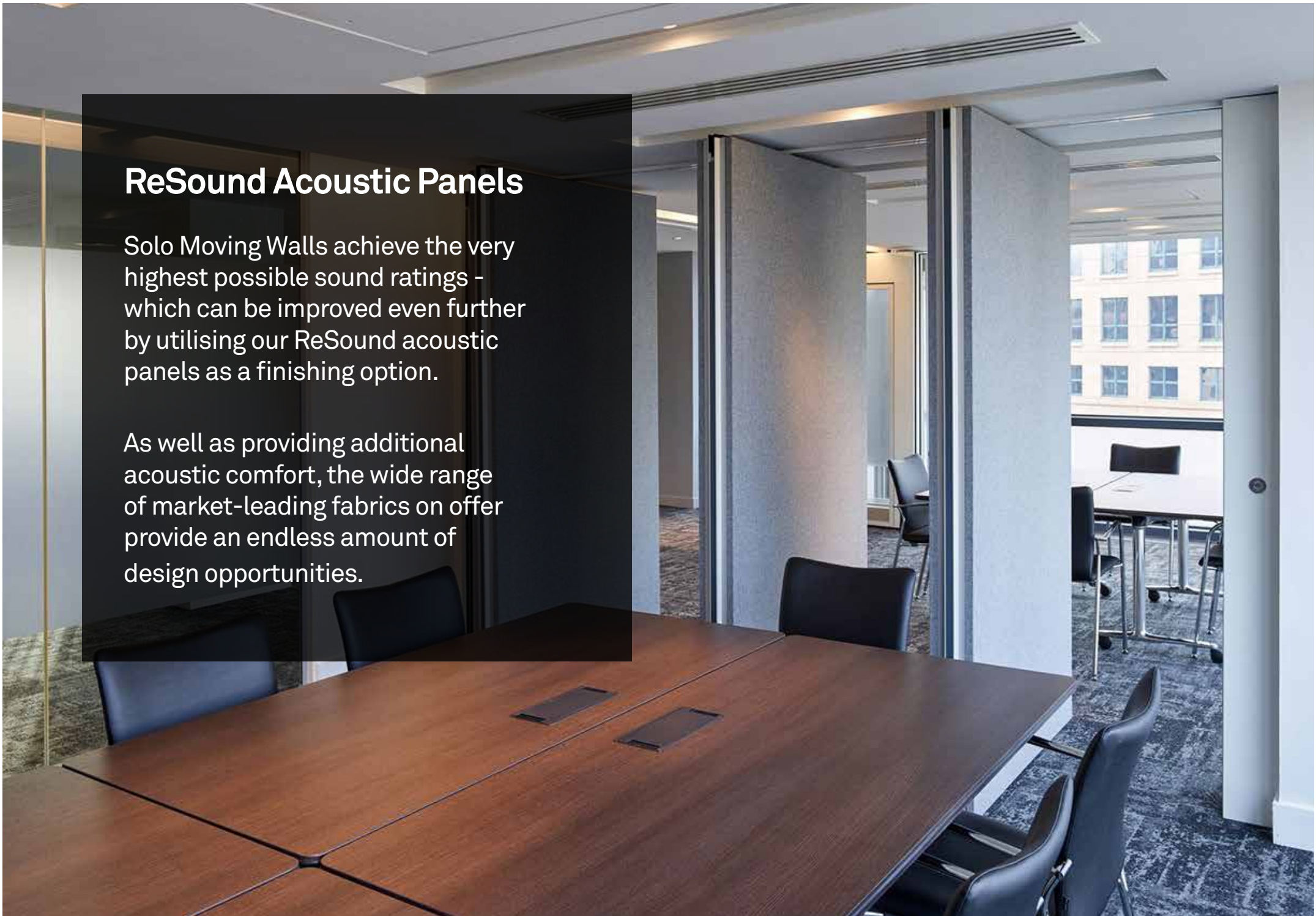


Yellow

## ReSound Acoustic Panels

Solo Moving Walls achieve the very highest possible sound ratings - which can be improved even further by utilising our ReSound acoustic panels as a finishing option.

As well as providing additional acoustic comfort, the wide range of market-leading fabrics on offer provide an endless amount of design opportunities.





# 17\_Fabric Options

Custom fabrics are available on request.

Please contact us for a sample.

Our fabrics come directly from leading suppliers - see their respective websites for a full list of colour options:

**Camira Fabrics**  
camirafabrics.com

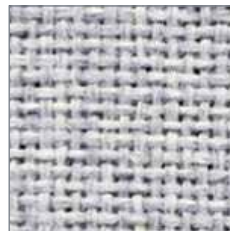
## Camira



**Blazer**  
View Options



**Blazer Lite**  
View Options



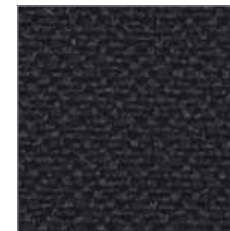
**Cara**  
View Options



**Corrosion**  
View Options



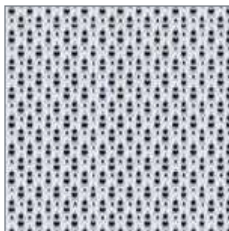
**Era**  
View Options



**Lucia**  
View Options



**Main Line Flax**  
View Options



**Nexus**  
View Options



**Patina**  
View Options



**Rivet**  
View Options



**Sonus**  
View Options



**Synergy**  
View Options

## 18\_Fabric Options

Custom fabrics are available on request.

Please contact us for a sample.

Our fabrics come directly from leading suppliers - see their respective websites for a full list of colour options:

**Abbotsford**  
[www.abbotsford-textiles.com](http://www.abbotsford-textiles.com)

## Abbotsford Classic Melton

					
Almond	Aqua	Ash	Black	Blue Grey	Blush
					
Bright Blue	Cadet Blue	Carribbean Blue	Chai	Charcoal	Cirrus
					
Citrine	Clay	Damson	Dark Orange	Denim	Espresso
					
Fall	Firecracker	Forrest	Fuhsia	Green	Hazel

## 19\_Fabric Options

Custom fabrics are available on request.

Please contact us for a sample.

Our fabrics come directly from leading suppliers - see their respective websites for a full list of colour options:

**Abbotsford**  
[www.abbotsford-textiles.com](http://www.abbotsford-textiles.com)

## Abbotsford Classic Melton



Hot Pink



Ink



Lamsbreath



Lead



Mallard



Merlot



Mist



Mocha



Mole



Moonstone



Moss



Mouse



Navy



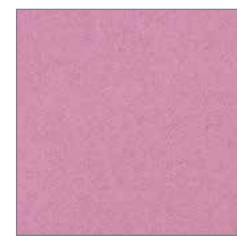
Ochre



Olive



Oxford



Pink



Platinum



Pumpkin



Red



Shadow



Silver



Smoke



Space Grey

## 20\_Fabric Options

Custom fabrics are available on request.

Please contact us for a sample.

Our fabrics come directly from leading suppliers - see their respective websites for a full list of colour options:

**Abbotsford**  
[www.abbotsford-textiles.com](http://www.abbotsford-textiles.com)

### Abbotsford Classic Melton



Spam



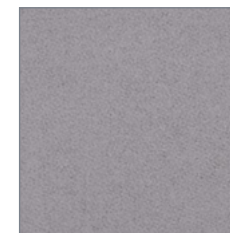
Spice



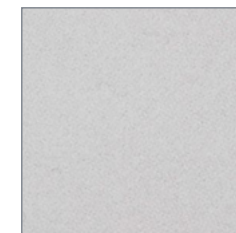
Steel



Stone



Warm Grey

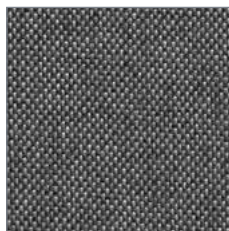


Winter White



Wolf

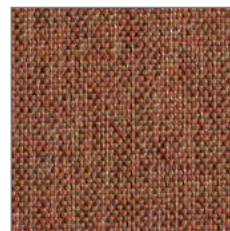
### Abbotsford Classic Plain



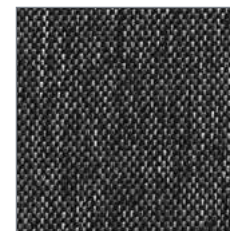
Ash



Azure



Burnt Orange



Charcoal



Chilli



Cloud

## 21\_Fabric Options

Custom fabrics are available on request.

Please contact us for a sample.

Our fabrics come directly from leading suppliers - see their respective websites for a full list of colour options:

**Abbotsford**  
[www.abbotsford-textiles.com](http://www.abbotsford-textiles.com)

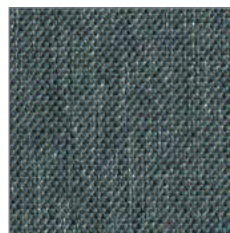
### Abbotsford Classic Plain



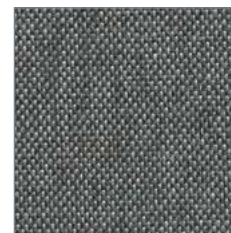
Forrest



Ink Blue



Jade



Laurel Green



Marmalade



Midnight



Oatmeal



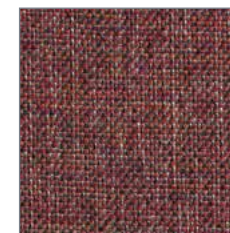
Ocean



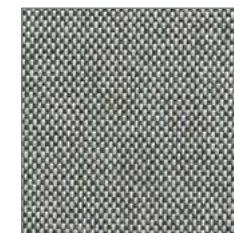
Peacock



Prussian



Rosewood



Sage



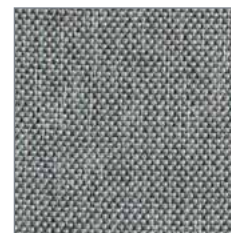
Salmon



Seafoam



Silver



Spa



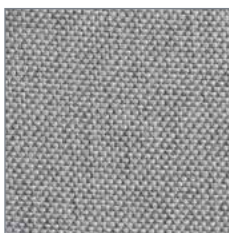
Space Grey



Spruce



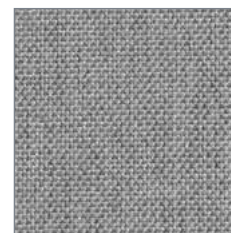
Steel Blue



Stone



Straw



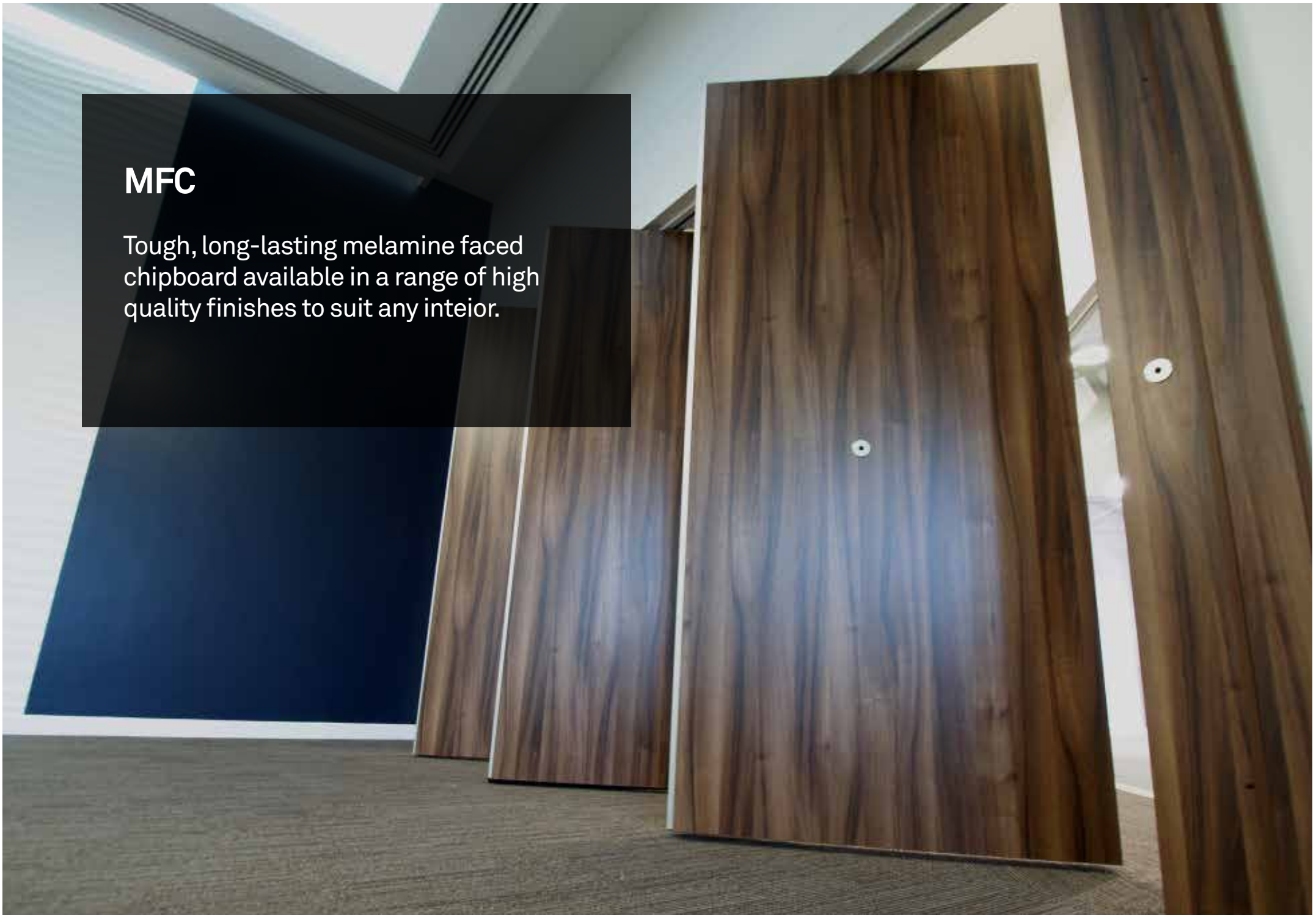
Thunder



Whale

## MFC

Tough, long-lasting melamine faced chipboard available in a range of high quality finishes to suit any interior.



## 23\_MFC Colours

Our cost-effective, high-quality MFC boards come in a variety of colours.

Please contact us for a sample.



**Tobacco Aida Walnut**  
H3704 - Egger



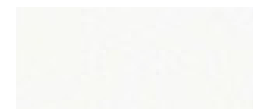
**UniPaint PG**  
PG - Unilin



**Light Sorano Oak**  
H1334 - Egger



**Verona Cherry**  
H1615 - Egger



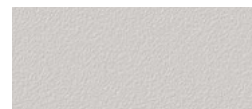
**Premium White**  
W1000 - Egger



**Black**  
U999 - Egger



**Grey Nebraska Oak**  
H3332 - Egger



**Light Grey**  
U708 - Egger



**Winchester Oak**  
H1381 - Egger



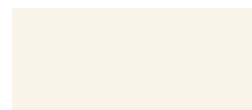
**Shorewood**  
H3090 - Egger



**Light Atelier**  
4298 - Kronospan



**Mainau Birch**  
H1733 - Egger



**Porcelain White**  
W1200 - Egger



**Lugano Oak**  
0687 - Kronospan



**White**  
0101 - Kronospan



**Maple**  
0375 - Kronospan



**Lancaster Oak**  
H3368 - Egger



**Mangfall Beech**  
1783 - Kronospan



**Black**  
0190 - Kronospan



**Walnut Opera**  
0481 - Kronospan



**English Oak**  
H1310 - Egger



**Bavarian Beech**  
H1511 - Egger



**Maple**  
H1521 - Egger



**Platinum White**  
W980 - Egger



**White**  
020 - Unilin

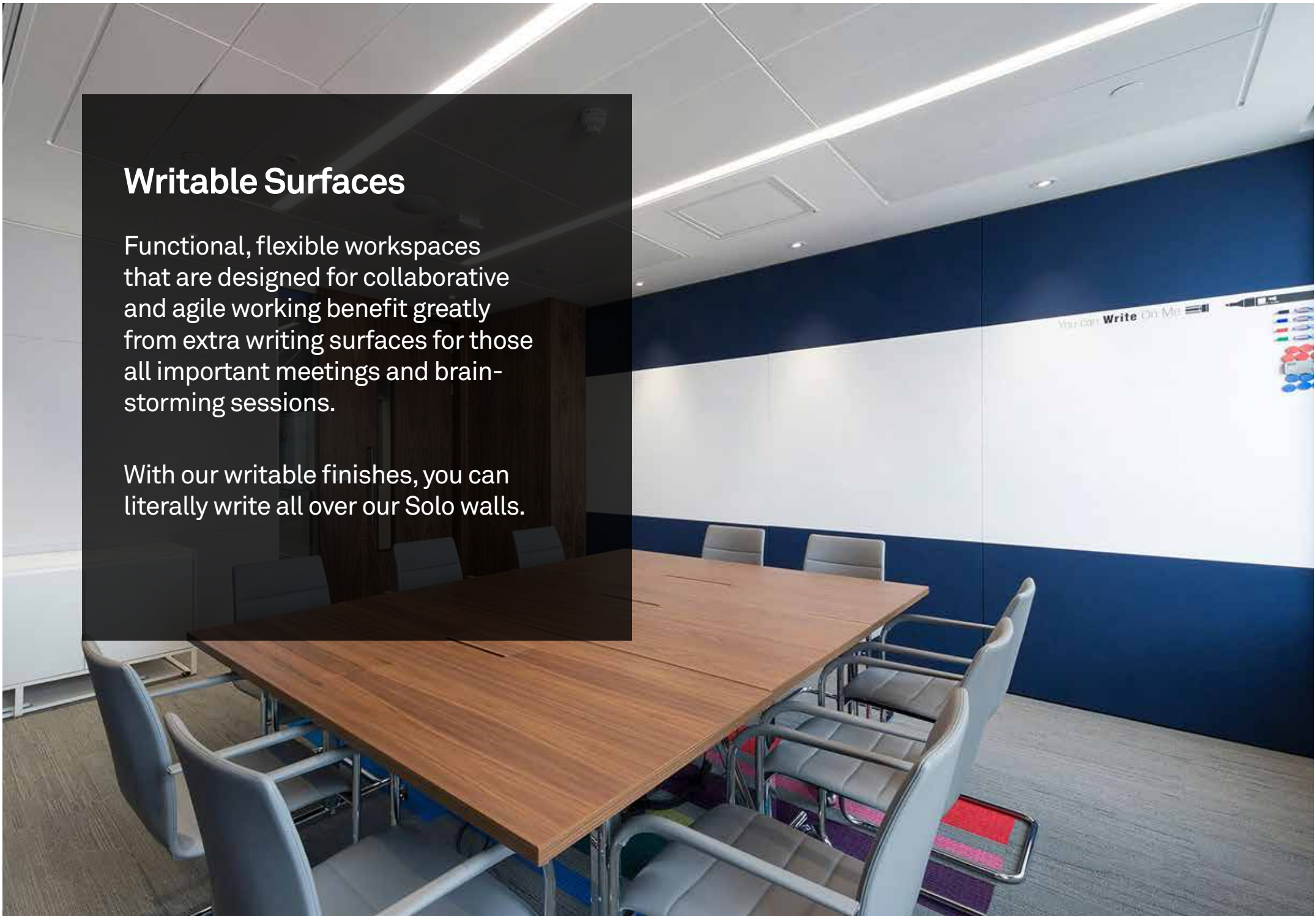


**Bavaria Beech**  
0381 - Kronospan

## Writable Surfaces

Functional, flexible workspaces that are designed for collaborative and agile working benefit greatly from extra writing surfaces for those all important meetings and brainstorming sessions.

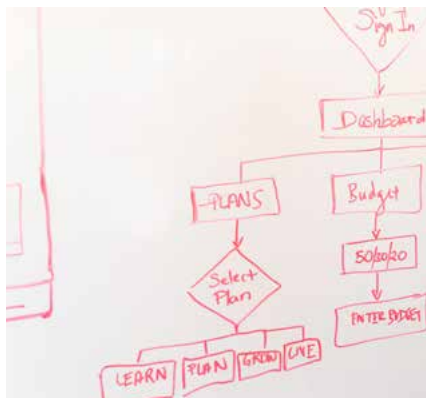
With our writable finishes, you can literally write all over our Solo walls.





## 25\_Writable Surfaces

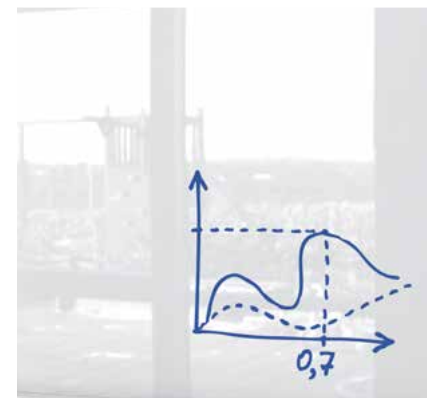
Our Drywipe and Back-painted glass finishes also come with optional handy magnetic capabilities built in.



Drywipe



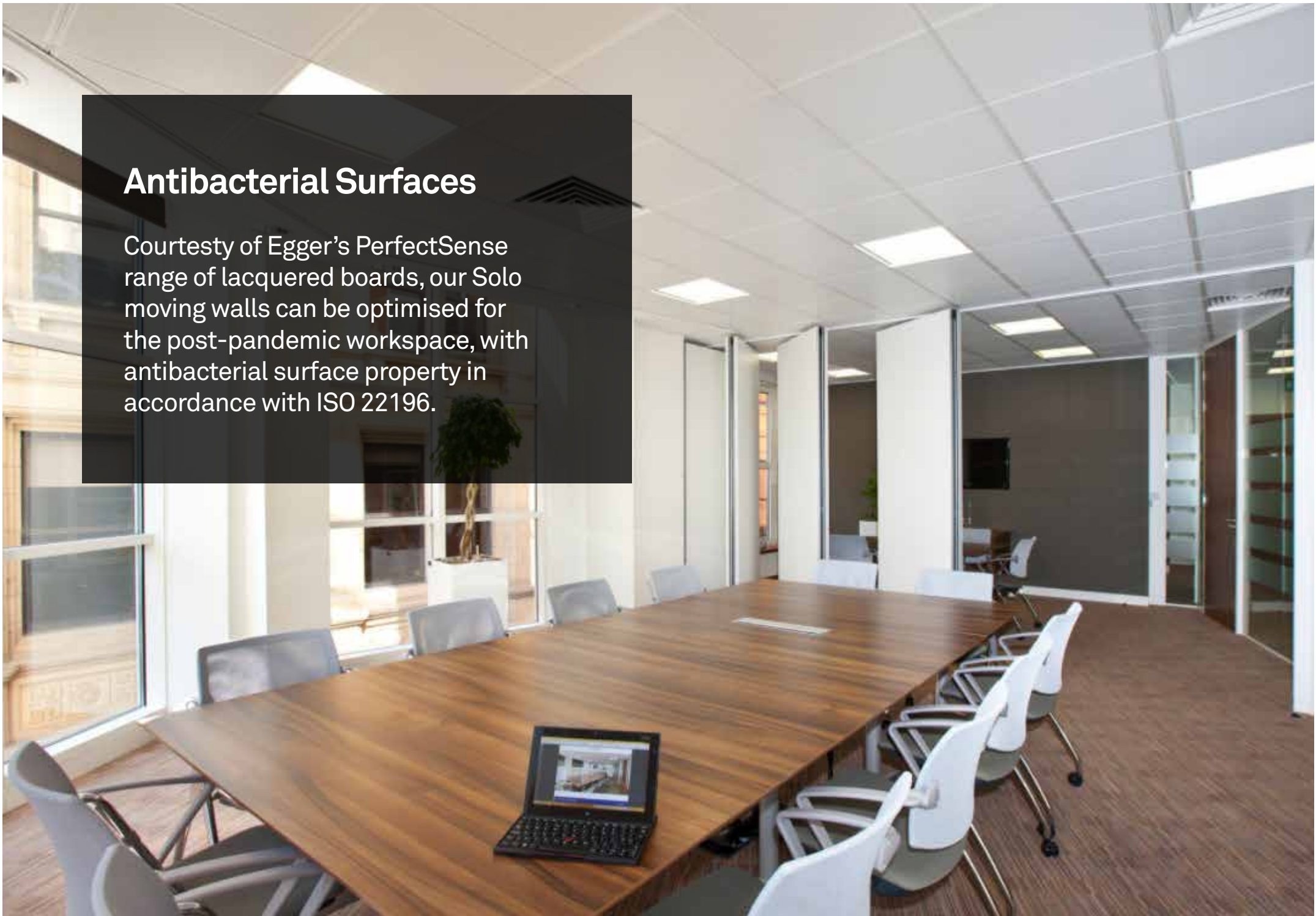
Chalk board



Back-painted glass

## Antibacterial Surfaces

Courtesy of Egger's PerfectSense range of lacquered boards, our Solo moving walls can be optimised for the post-pandemic workspace, with antibacterial surface property in accordance with ISO 22196.



## 27\_Antibacterial Surfaces

The PerfectSense range of finishes is available as a gloss option with a deep, reflective, glass-like surface, or a matt option which is warm and smooth to the touch, with high resistance and anti-fingerprint properties.

### Matt Colours



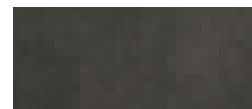
**Black Pietra Grigia**  
F206 PM - Egger



**Black**  
U999 PM - Egger



**Cashmere Grey**  
U702 PM - Egger



**Dark Steel**  
F627 PM - Egger



**Dust Grey**  
U732 PM - Egger



**Graphite Grey**  
U961 PM - Egger



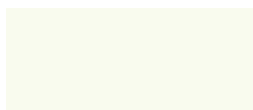
**Indigo Blue**  
U599 PM - Egger



**Light Grey**  
U709 PM - Egger



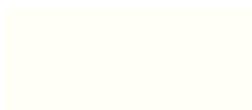
**Light Grey Metal Rock**  
F120 PM - Egger



**Premium White**  
W1000 PM - Egger



**Stone Grey**  
U727 PM - Egger

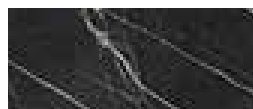


**Alpine White**  
W1100 PM - Egger



**White Levanto Marble**  
F812 PM - Egger

### Gloss Colours



**Black Pietra Grigia**  
F206 PG - Egger



**Black**  
U999 PG - Egger



**Cashmere Grey**  
U702 PG - Egger



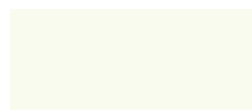
**Dust Grey**  
U732 PG - Egger



**Graphite Grey**  
U961 PG - Egger



**Light Grey**  
U709 PG - Egger



**Premium White**  
W1000 PG - Egger



**Red Chilli**  
U232 PG - Egger



**Stone Grey**  
U727 PG - Egger



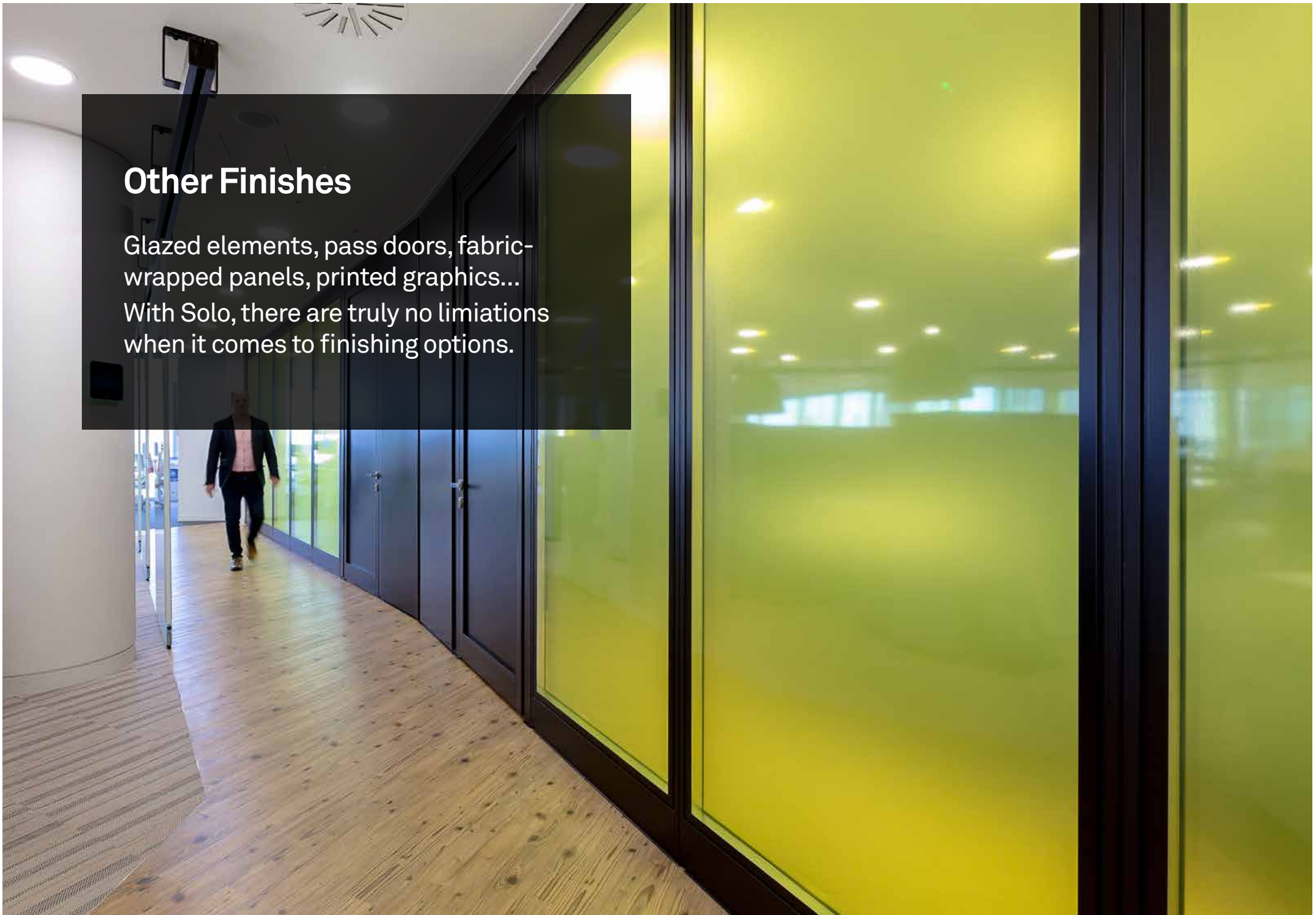
**Alpine White**  
W1100 PG - Egger



**White Levanto Marble**  
F812 PG - Egger

## Other Finishes

Glazed elements, pass doors, fabric-wrapped panels, printed graphics...  
With Solo, there are truly no limitations when it comes to finishing options.



## 29\_Other Finishes

For more information on any of the finish options applicable to our Solo moving walls, or if you'd like to discuss a custom finish of your own, then please get in touch: [sales@creatif.org.uk](mailto:sales@creatif.org.uk)



### Printed Graphics

Custom graphics with no limitations.



### Acoustic aRT

Custom, high-quality artwork printed onto removable and washable stretch fabric.



### OSB

Raw, textured board for an exposed finish.

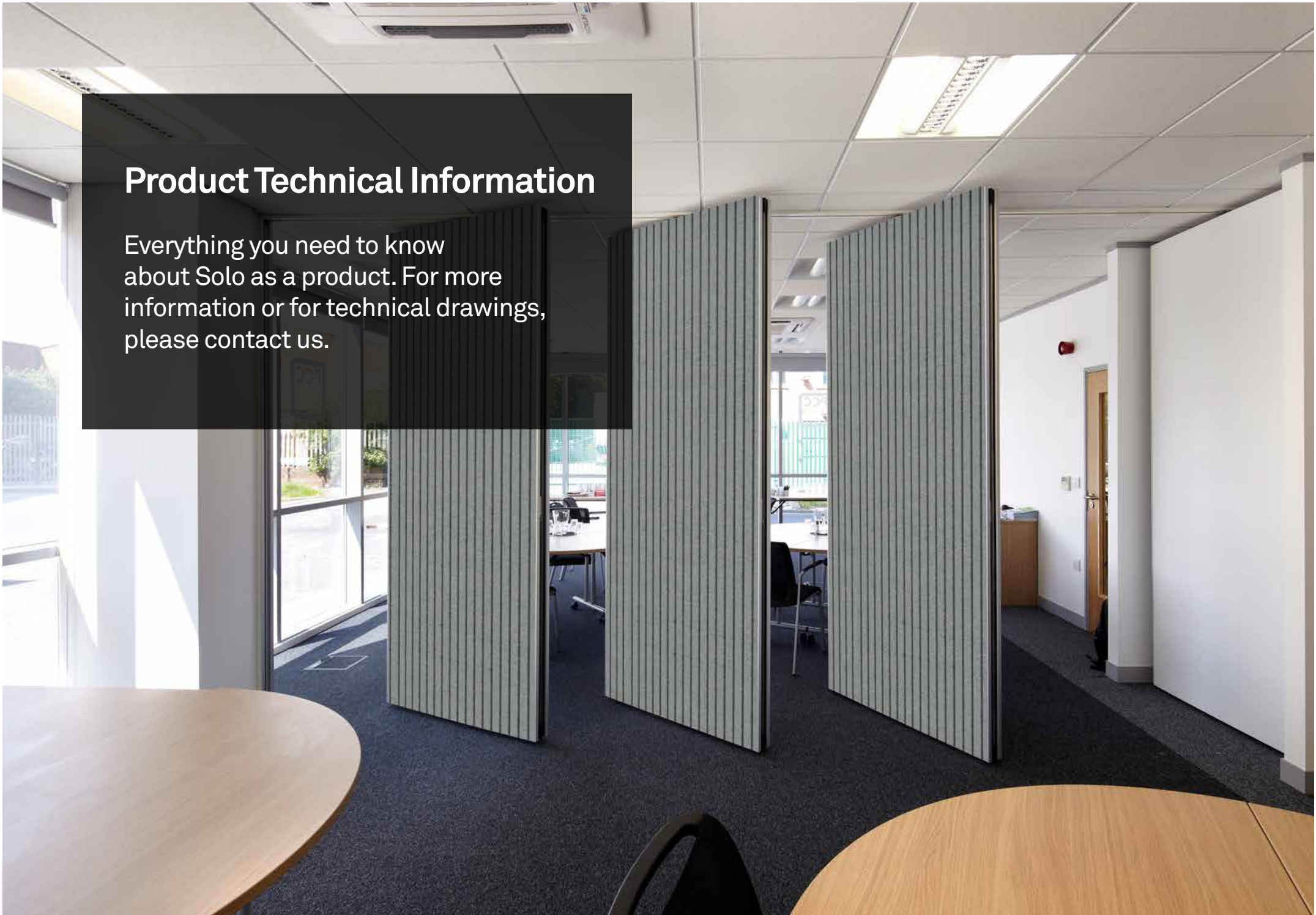


### Pass Doors & Vision Panels

High quality doors and vision panels can of course be included in your design.

## Product Technical Information

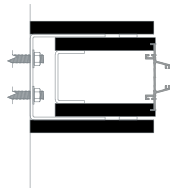
Everything you need to know about Solo as a product. For more information or for technical drawings, please contact us.



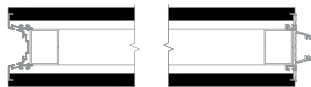
# 31\_Technical Details

- 1. Expanding Jamb
- 2. E-Basic Panel
- 3. Standard Panel
- 4. Fixed Jamb
- 5. Single Point
- 6. Twin Point
- 7. Floor Seal
- 8. SP with Pelmet
- 9. TP with Pelmet

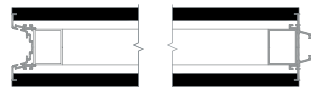
1



2



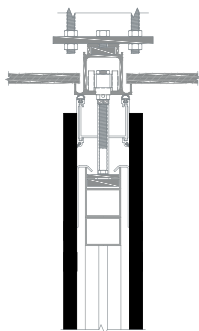
3



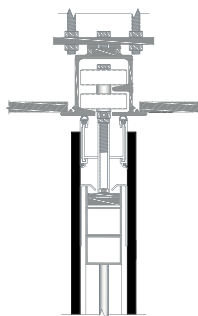
4



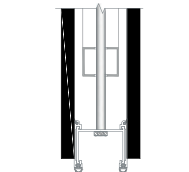
5



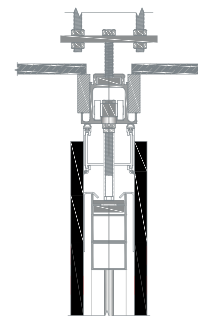
6



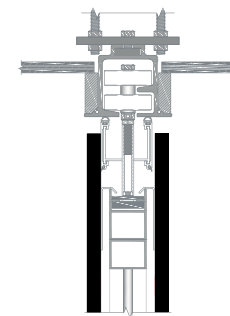
7



8



9



## 32\_Technical Information

\* Anything over 3750mm must be TP.

**Contact Creatif for special requirements.**

	SOLO			
	110	125	Fabric Wrapped	Semi Auto
Acoustic rating dB (Rw)	44 > 53	55 > 57	47 > 57	55 > 57
Panel thickness	110mm	125mm	varies	varies
Weight KG/M2	47KG	64KG	varies	varies
Max. height	5000mm*	5000mm*	5000mm*	5000mm*
Max. panel width	1220mm	1220mm	1220mm	1220mm
Panel construction	Aluminium (inc. steel over 3m)	Aluminium (inc. steel over 3m)	Aluminium (inc. steel over 3m)	Aluminium and steel
Operable seal	Manual	Manual	Manual	Semi auto
Panel construction	MFC – 18mm	MFC – 25mm	MDF – 15mm + fabric	varies
Track system	Aluminium TP + SP	Aluminium TP + SP	Aluminium TP + SP	Aluminium TP + SP
Tolerance height MM	-/+ 5mm	-/+ 5mm	-/+ 5mm	-/+ 5mm
Tolerance width MM	-/+ 10mm	-/+ 10mm	-/+ 10mm	-/+ 10mm



### 33\_Standard Stacking Configuration

**Config A**  
Single-point

**Config B**  
Twin-point,  
H-park

**Config C**  
Twin-point,  
Offset Stack

**Config D**  
Twin-point,  
Linear Stack

**Config E**  
Twin-point,  
H-park Split

**Config F**  
Twin-point,  
Split Offset Track

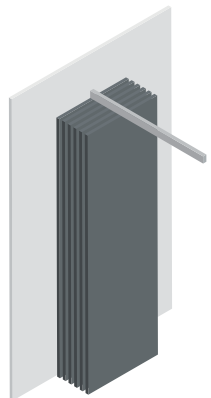
**Please note:**

Panel thickness will vary depending on system type.

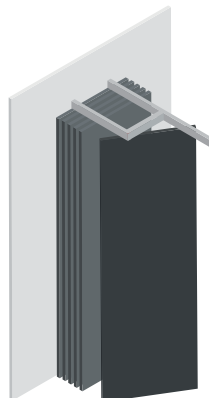
Other stacking options are available on request.

Please contact Creatif for further details.

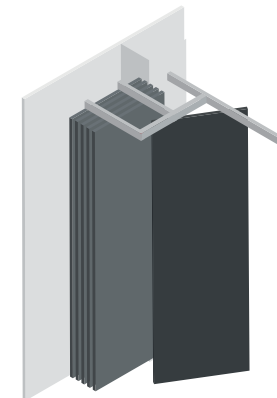
A



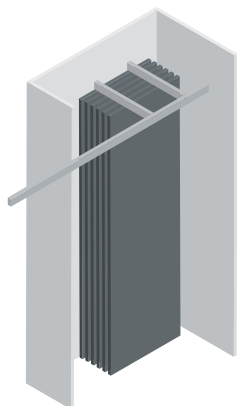
B



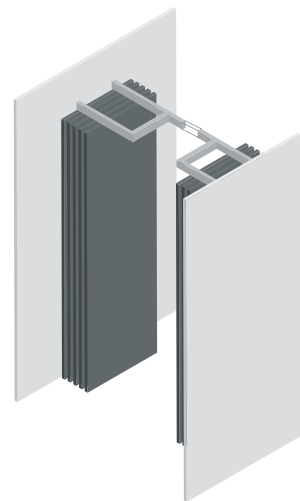
C



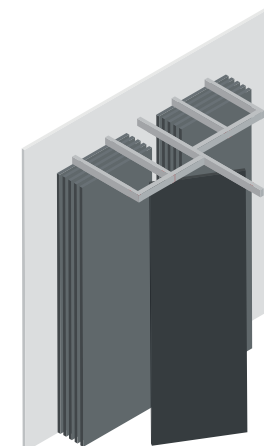
D



E



F

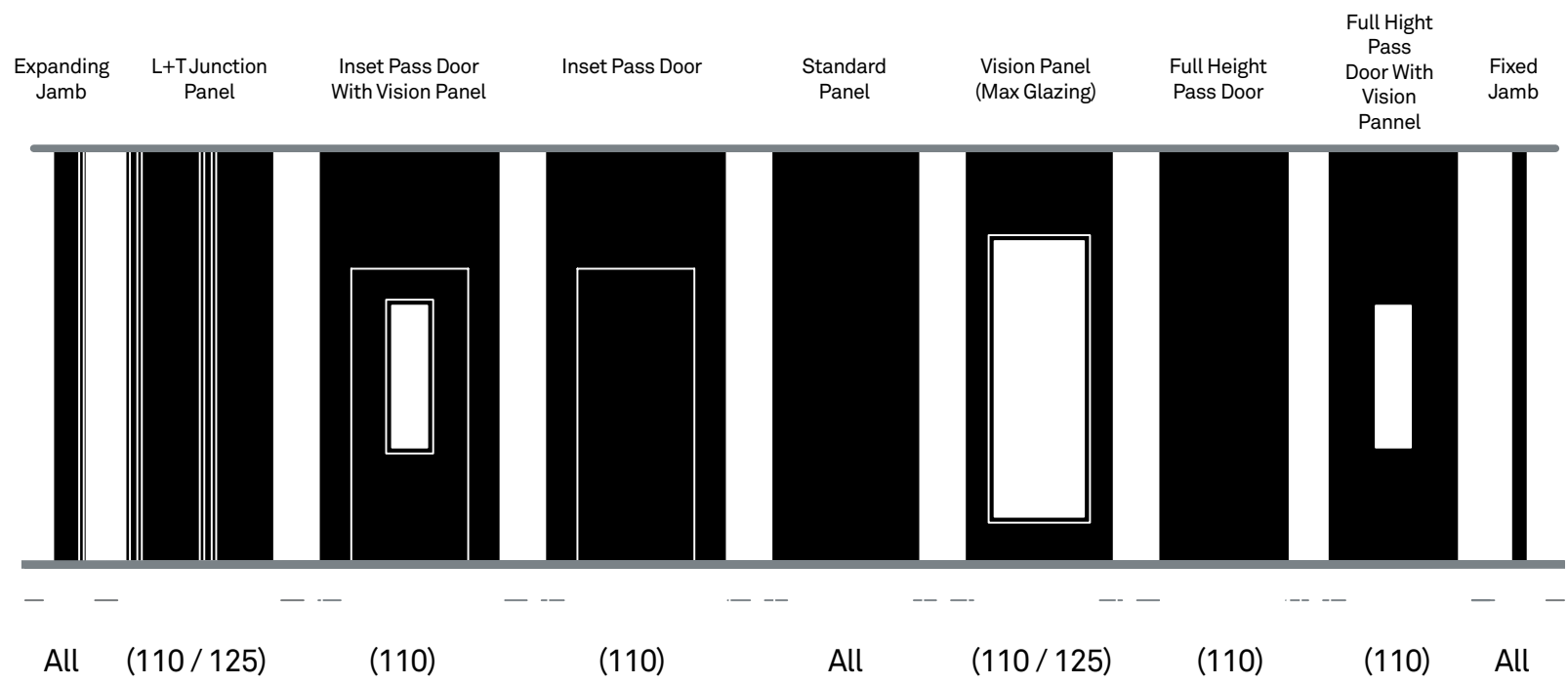


# 34\_Available Panel Elevations

Numbers in Brackets ( ) represent system availability.

For constraints and variations contact Creatif: [sales@creatif.org.uk](mailto:sales@creatif.org.uk)

Ironmongery and vision panels subject to constraints, contact us for Information.



## 35\_Contact

### Details

T: +44 (0) 113 270 1239

F: +44 (0) 113 239 1672

E: sales@creatif.org.uk

### Head Office

Unit 2 National Road  
Business Park,  
National Road,  
Leeds LS10 1TE

**Visit our website to find out more about Solo  
and the rest of our moving walls range...**



[www.creatif.org.uk](http://www.creatif.org.uk)