



# Float

## Agile Moving Panels

[www.creatif.org.uk](http://www.creatif.org.uk)



## 02\_Float Agile Moving Panels

Float is a mobile panel system that glides into place in moments, on demand, anywhere you want it.

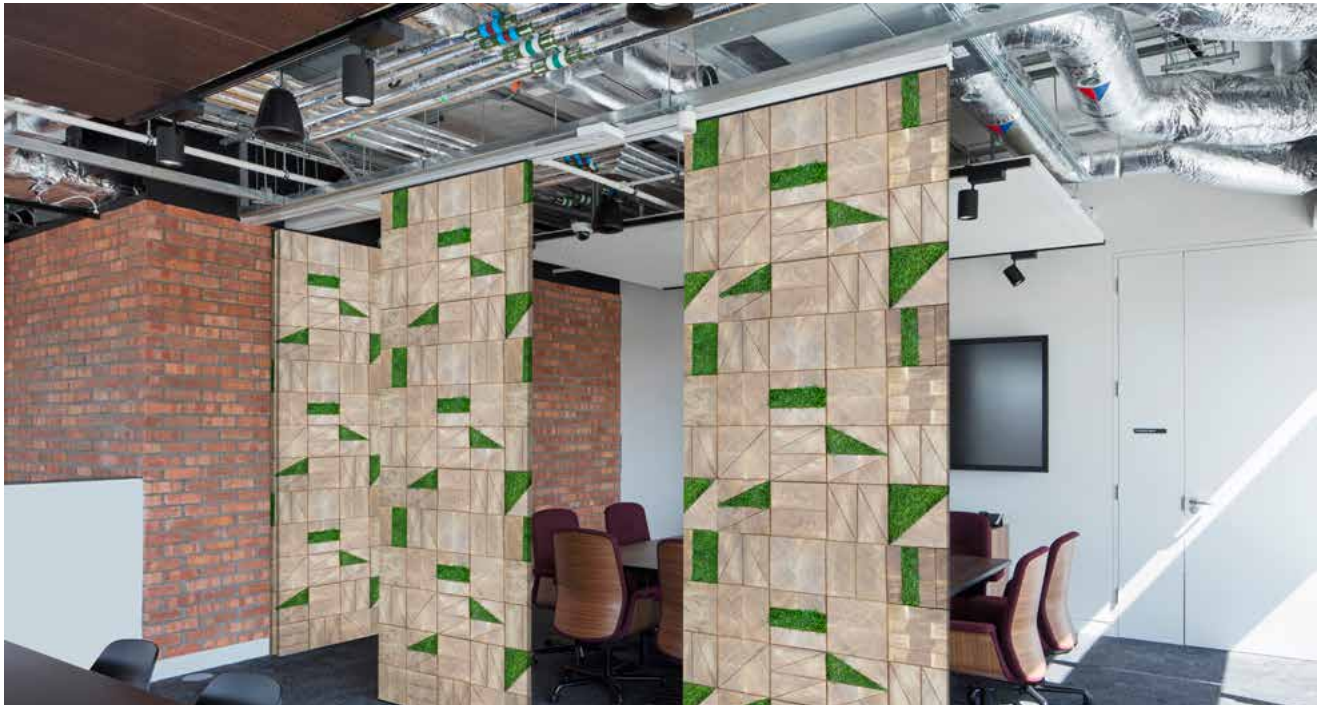
Perfectly suited to unlocking workspace flexibility, Float sliding panels create options, provide choice and allow space to be used in ways not before deemed possible.

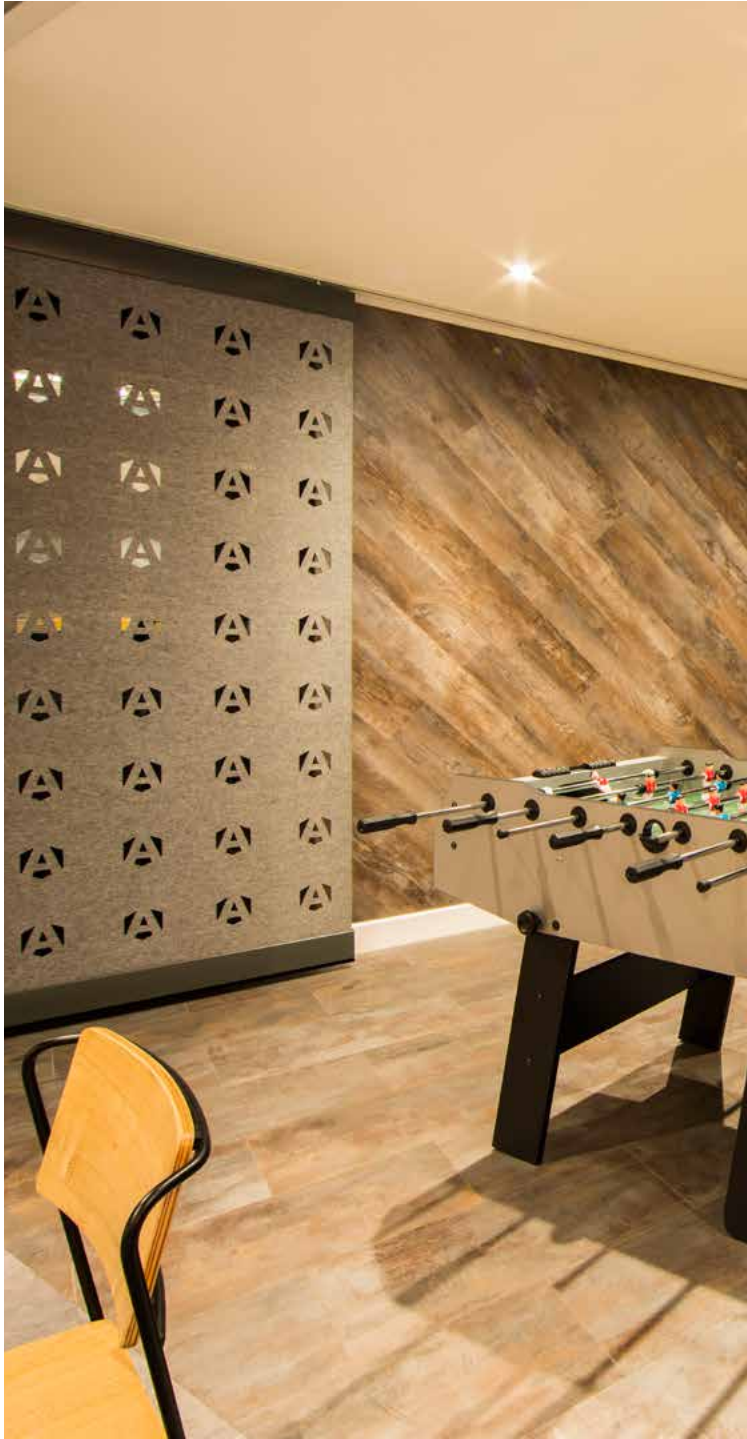
Whether the panels are drywipe for functionality, mesh for rugged aesthetics, Mellow polyester for acoustic absorption, charred timber or moss for natural loveliness, Float is as versatile as it is stunning.

## Contents:

<b>Page 03-04</b>	Gallery
<b>Page 05-08</b>	Mellow Acoustic Polyester
<b>Page 09-10</b>	Moss & Foliage
<b>Page 11-12</b>	Charred Timber
<b>Page 13-14</b>	Natural Bark
<b>Page 15-25</b>	Other Finishes
<b>Page 26-29</b>	Product Technical Information
<b>Page 31</b>	Contact

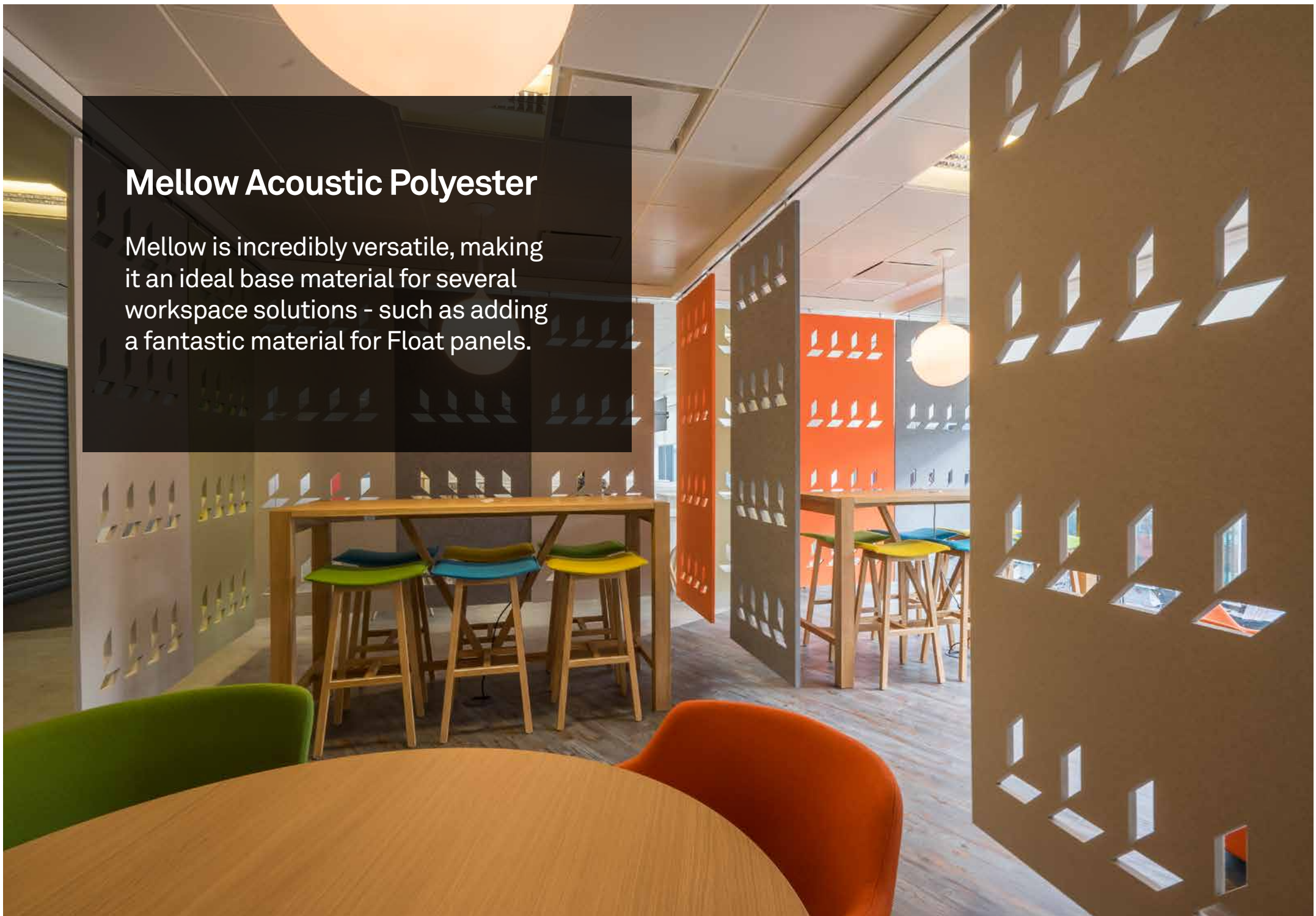






## Mellow Acoustic Polyester

Mellow is incredibly versatile, making it an ideal base material for several workspace solutions - such as adding a fantastic material for Float panels.



## 06\_Float Mellow

Float is your perfect agile working buddy - a mobile panel system that glides into place in moments, on demand, anywhere you want it.

Using Mellow panels in conjunction with our Float system, lightweight operable partitions can be made.



Float Mellow can be used to create private spaces...



...or open spaces up for larger-scale use when required.



The lightweight panels can be moved with ease.



Create lines, shapes and patterns with our Groove cutting technique.

# 07\_Mellow Polyester Colours

Mellow comes in a range of colours, please contact us for a physical sample.



Charcoal Grey



Stone Grey



Light Grey



Dark Blue



Navy



Light Blue



Cyan



Orange



Yellow



Black



White



Ivory



Red



Purple



Green



Smoke Grey  
24mm thick only



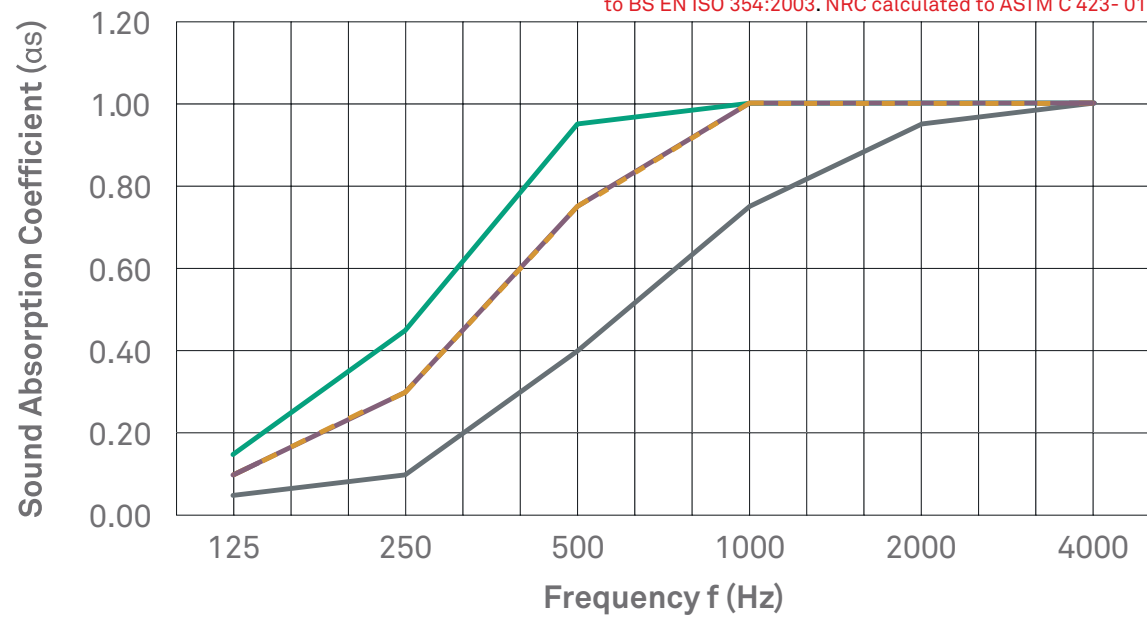
Pink  
24mm thick only

## 08\_Mellow Acoustic Info

Mellow is specifically designed to reduce and control reverberated (echo) noise in building interiors.

Minimum Noise Reduction Coefficient 0.55.

The Laboratory Measurement of Random Incidence Sound Absorption to BS EN ISO 354:2003. NRC calculated to ASTM C 423- 01.

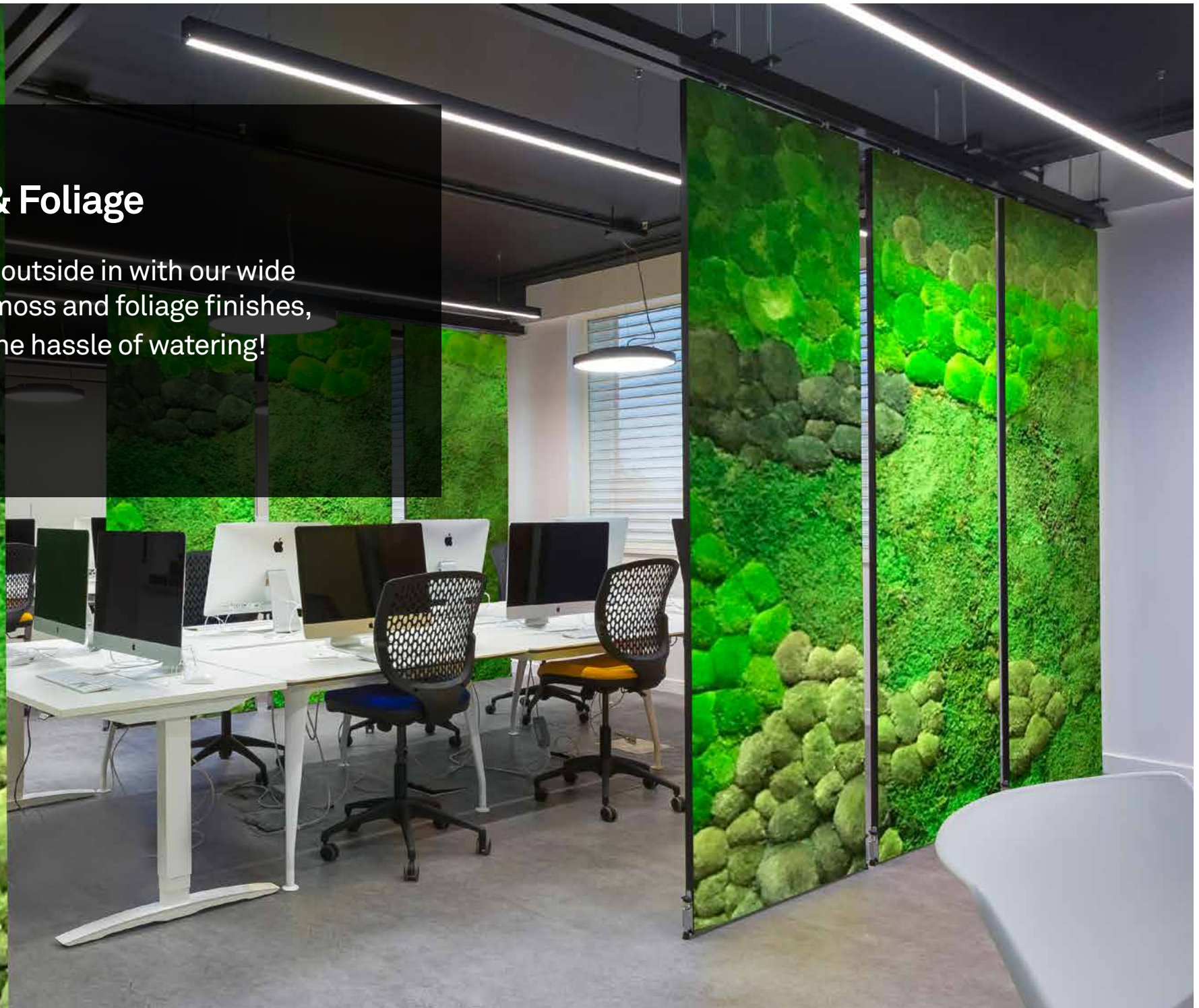


Frequency (Hz)1	25	250	500	1000	2000	4000N	RC
12mm Mellow	0.05	0.10	0.40	0.75	0.95	1.00	0.55
12mm Mellow (Air Gap)	0.10	0.30	0.75	1.00	1.00	1.00	0.75
24mm Mellow	0.10	0.30	0.75	1.00	1.00	1.00	0.75
24mm Mellow (Air Gap)	0.15	0.45	0.95	1.00	1.00	1.00	0.85



## Moss & Foliage

Bring the outside in with our wide range of moss and foliage finishes, without the hassle of watering!



## 10\_Moss & Foliage Options

All of our moss and foliage is 100% real, and thanks to being treated needs no watering, sunlight or maintenance and will stay fresh and soft to the touch long into the future... Making it a perfect alternative to a traditional living wall.



Lowland Moss



Raindeer Moss Light Green



Raindeer Moss Mid Green



Raindeer Moss Dark Green



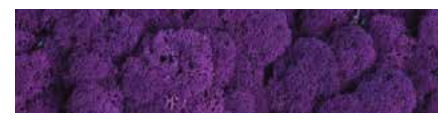
Raindeer Moss Charcoal



Raindeer Moss Natural



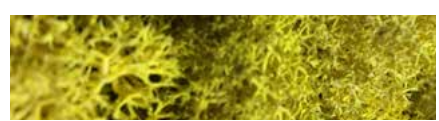
Raindeer Moss Pink



Raindeer Moss Purple



Raindeer Moss Brown



Raindeer Moss Yellow



Raindeer Moss Blue



Bun Moss Light Green



Bun Moss Mid Green



Bun Moss Dark Green



Ivy



Jungle Foliage



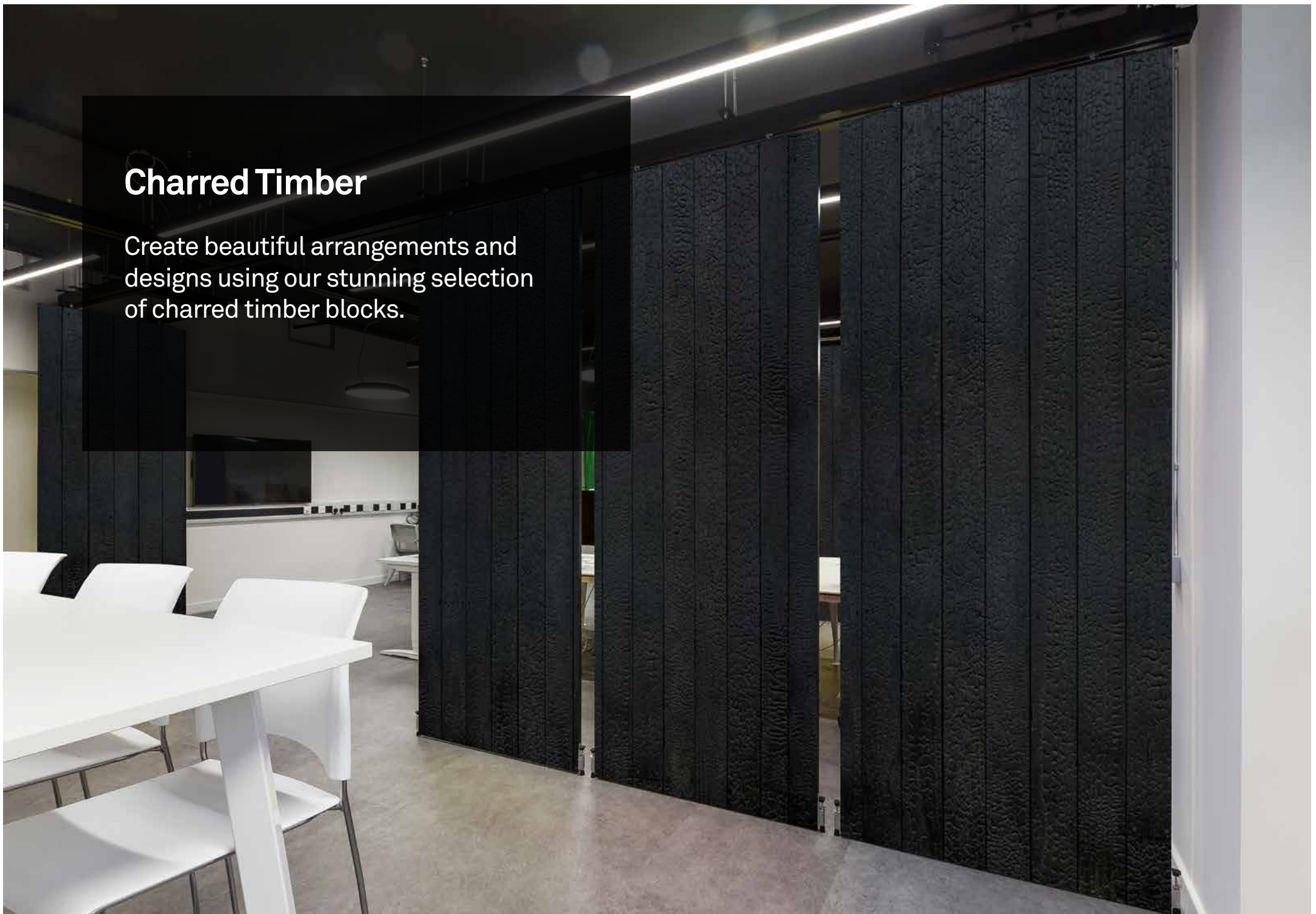
Jungle Foliage & Yellow Flowers



Jungle Foliage & Pink Flowers

## Charred Timber

Create beautiful arrangements and designs using our stunning selection of charred timber blocks.



## 12\_Charred Timber Options

Our beautifully unique charred timber pieces are created by “Yakisugi” - the ancient Japanese craft of conserving timber through the charring of its surface with flame. Rather than being painted, the timber is darkened to one of five levels.



Level 1



Level 2



Level 3



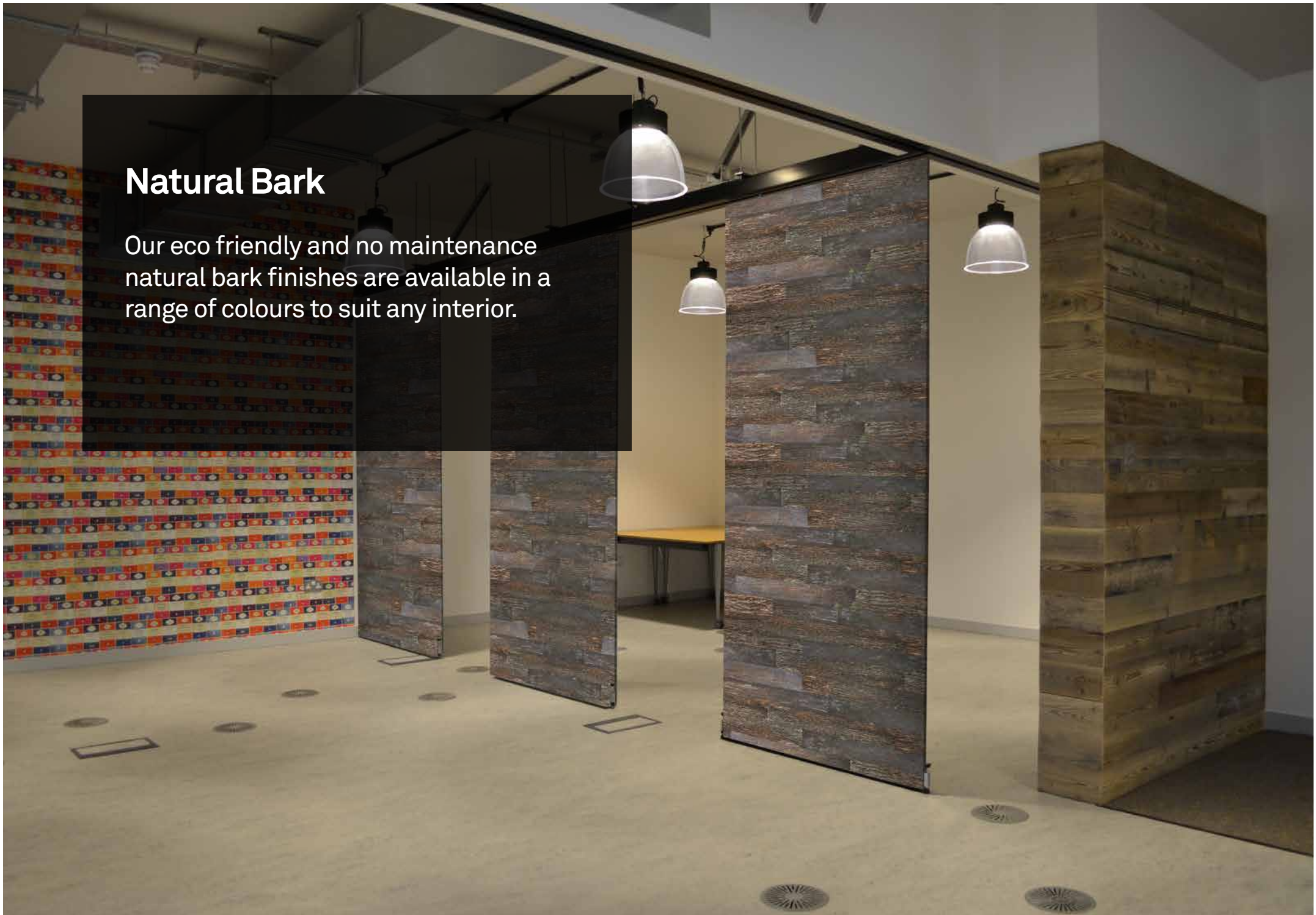
Level 4



Level 5

## Natural Bark

Our eco friendly and no maintenance natural bark finishes are available in a range of colours to suit any interior.



# 14\_Natural Bark

Our stunning natural bark finishes are carefully crafted by hand, with three bark styles to choose, each of which are available in a selection of colours.

## Types of Bark



Birch



Cork



Poplar

## Colour Options



Black



Coral



Blue



Dark Green



Dark Grey



Gold



Light Blue



Light Green



Light Grey



Mid Grey



Pink



Red



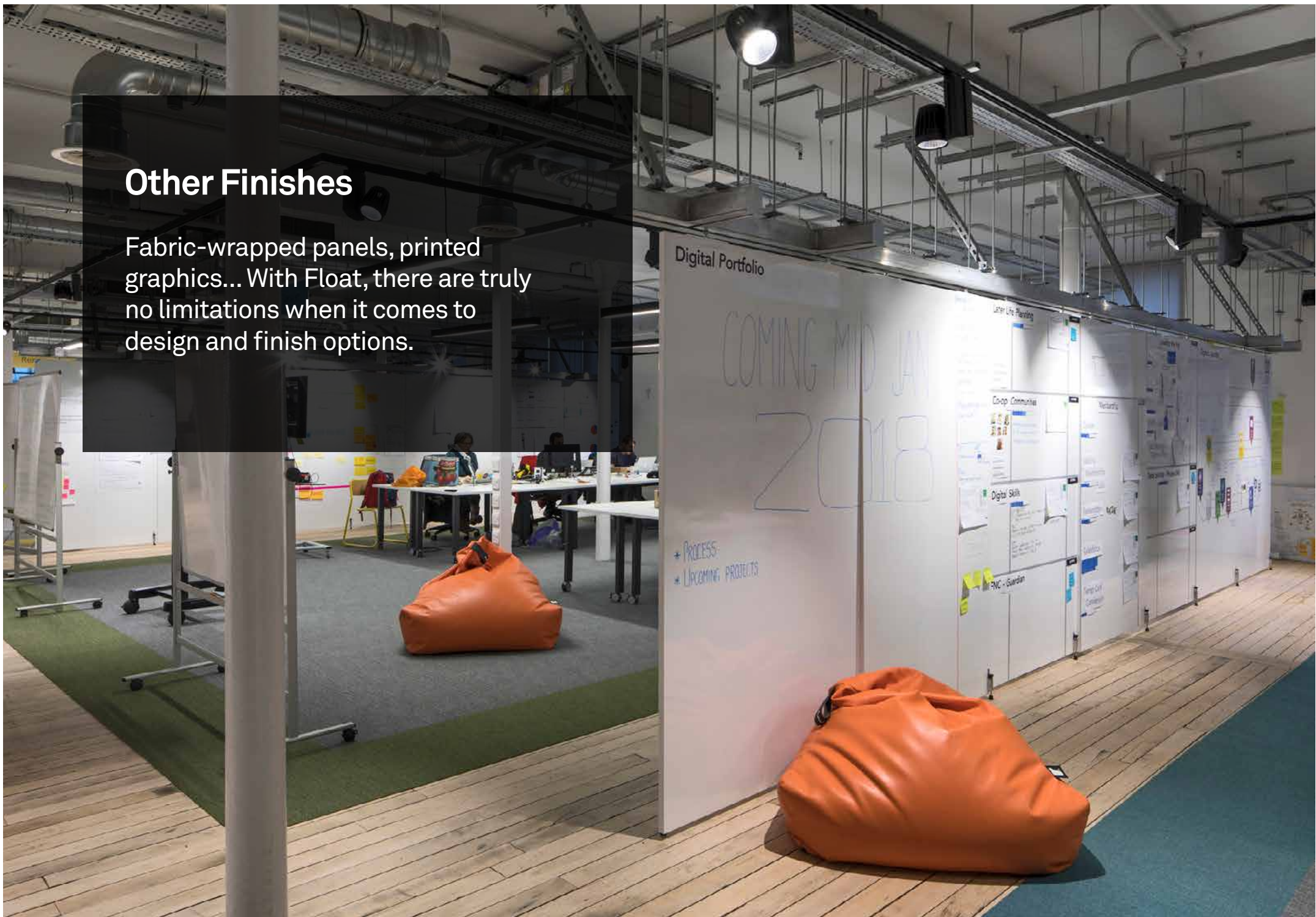
White



Yellow

## Other Finishes

Fabric-wrapped panels, printed graphics... With Float, there are truly no limitations when it comes to design and finish options.



# 16\_Fabric Options

Improve the acoustics within your environment by combining Float with our Class A ReSound Acoustic Panels.

As well as providing additional acoustic comfort, the wide range of market-leading fabrics on offer provide an endless amount of design opportunities.

Custom fabrics are available on request. Please contact us for a sample.

Our fabrics come directly from leading suppliers - see their respective websites for a full list of colour options:

**Camira Fabrics**  
camirafabrics.com

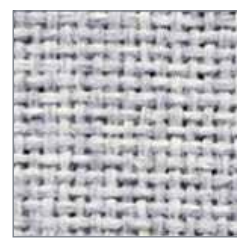
## Camira



**Blazer**  
View Options



**Blazer Lite**  
View Options



**Cara**  
View Options



**Corrosion**  
View Options



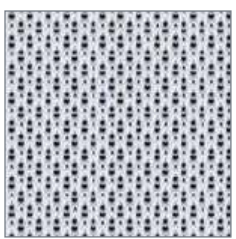
**Era**  
View Options



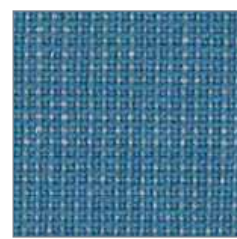
**Lucia**  
View Options



**Main Line Flax**  
View Options



**Nexus**  
View Options



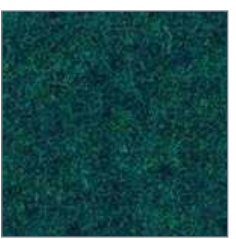
**Patina**  
View Options



**Rivet**  
View Options



**Sonus**  
View Options



**Synergy**  
View Options



## 17\_Fabric Options

Custom fabrics are available on request.

Please contact us for a sample.

Our fabrics come directly from leading suppliers - see their respective websites for a full list of colour options:

**Abbotsford**  
[www.abbotsford-textiles.com](http://www.abbotsford-textiles.com)

## Abbotsford Classic Melton

					
Almond	Aqua	Ash	Black	Blue Grey	Blush
					
Bright Blue	Cadet Blue	Carribbean Blue	Chai	Charcoal	Cirrus
					
Citrine	Clay	Damson	Dark Orange	Denim	Espresso
					
Fall	Firecracker	Forrest	Fuhsia	Green	Hazel

## 18\_Fabric Options

Custom fabrics are available on request.

Please contact us for a sample.

Our fabrics come directly from leading suppliers - see their respective websites for a full list of colour options:

**Abbotsford**  
[www.abbotsford-textiles.com](http://www.abbotsford-textiles.com)

## Abbotsford Classic Melton



## 19\_Fabric Options

Custom fabrics are available on request.

Please contact us for a sample.

Our fabrics come directly from leading suppliers - see their respective websites for a full list of colour options:

**Abbotsford**  
[www.abbotsford-textiles.com](http://www.abbotsford-textiles.com)

### Abbotsford Classic Melton



Spam



Spice



Steel



Stone



Warm Grey

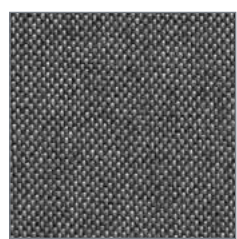


Winter White



Wolf

### Abbotsford Classic Plain



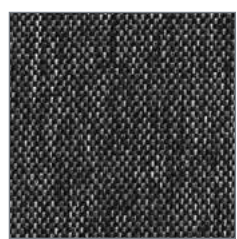
Ash



Azure



Burnt Orange



Charcoal



Chilli



Cloud

## 20\_Fabric Options

Custom fabrics are available on request.

Please contact us for a sample.

Our fabrics come directly from leading suppliers - see their respective websites for a full list of colour options:

**Abbotsford**  
[www.abbotsford-textiles.com](http://www.abbotsford-textiles.com)

### Abbotsford Classic Plain



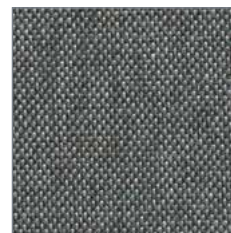
Forrest



ink Blue



Jade



Laurel Green



Marmalade



Midnight



Oatmeal



Ocean



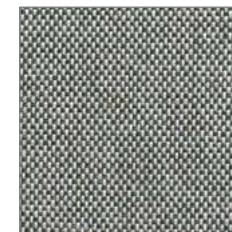
Peacock



Prussian



Rosewood



Sage



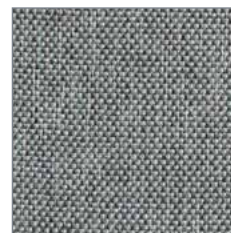
Salmon



Seafoam



Silver



Spa



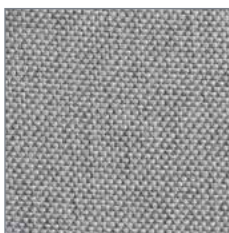
Space Grey



Spruce



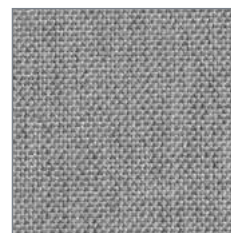
Steel Blue



Stone



Straw



Thunder



Whale

## 21\_MFC Colours

Our cost-effective, high-quality MFC boards come in a variety of colours.

Please contact us for a sample.



Tobacco Aida Walnut  
H3704 - Egger



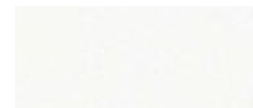
UniPaint  
PG - Unilin



Light Sorano Oak  
H1334 - Egger



Verona Cherry  
H1615 - Egger



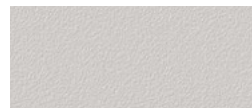
Premium White  
W1000 - Egger



Black  
U999 - Egger



Grey Nebraska Oak  
H3332 - Egger



Light Grey  
U708 - Egger



Winchester Oak  
H1381 - Egger



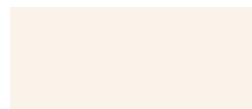
Shorewood  
H3090 - Egger



Light Atelier  
4298 - Kronospan



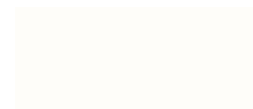
Mainau Birch  
H1733 - Egger



Porcelain White  
W1200 - Egger



Lugano Oak  
0687 - Kronospan



White  
0101 - Kronospan



Maple  
0375 - Kronospan



Lancaster Oak  
H3368 - Egger



Mangfall Beech  
1783 - Kronospan



Black  
0190 - Kronospan



Walnut Opera  
0481 - Kronospan



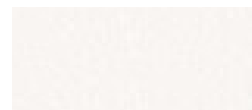
English Oak  
H1310 - Egger



Bavarian Beech  
H1511 - Egger



Maple  
H1521 - Egger



Platinum White  
W980 - Egger



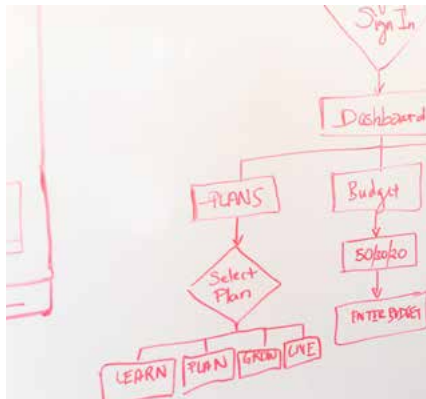
White  
020 - Unilin



Bavaria Beech  
0381 - Kronospan

## 22\_Writable Surfaces

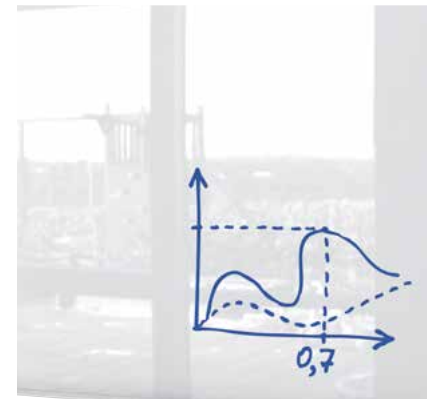
Our Drywipe and Back-painted glass finishes also come with optional handy magnetic capabilities built in.



Drywipe



Chalk board



Back-painted glass

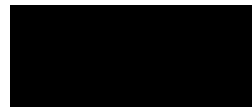
## 23\_Antibacterial Surfaces

The PerfectSense range of finishes is available as a gloss option with a deep, reflective, glass-like surface, or a matt option which is warm and smooth to the touch, with high resistance and anti-fingerprint properties.

### Matt Colours



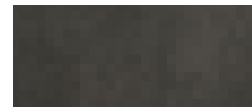
Black Pietra Grigia  
F206 PM - Egger



Black  
U999 PM - Egger



Cashmere Grey  
U702 PM - Egger



Dark Steel  
F627 PM - Egger



Dust Grey  
U732 PM - Egger



Graphite Grey  
U961 PM - Egger



Indigo Blue  
U599 PM - Egger



Light Grey  
U709 PM - Egger



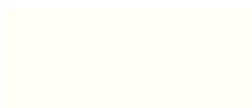
Light Grey Metal Rock  
F120 PM - Egger



Premium White  
W1000 PM - Egger



Stone Grey  
U727 PM - Egger

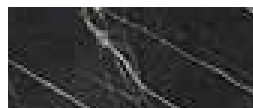


Alpine White  
W1100 PM - Egger



White Levanto Marble  
F812 PM - Egger

### Gloss Colours



Black Pietra Grigia  
F206 PG - Egger



Black  
U999 PG - Egger



Cashmere Grey  
U702 PG - Egger



Dust Grey  
U732 PG - Egger



Graphite Grey  
U961 PG - Egger



Light Grey  
U709 PG - Egger



Premium White  
W1000 PG - Egger



Red Chilli  
U232 PG - Egger



Stone Grey  
U727 PG - Egger



Alpine White  
W1100 PG - Egger

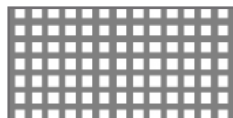


White Levanto Marble  
F812 PG - Egger

## 24\_Panel Finishes: Aluminium Mesh

In addition to the panel frame, aluminium sections can be incorporated in a variety of styles with varying hole sizes.

All aluminium components can be painted to any RAL colour.



**Square 90°**  
(56% open area)

Hole sizes:

3mm  
6.3mm  
10mm  
12.7mm  
15mm  
19mm



**Square 45°**  
(45% open area)

Hole sizes:

3mm  
6.3mm  
10mm  
12.7mm  
15mm  
19mm



**Square 5 Slots, 45°**  
(29% open area)

Hole sizes:

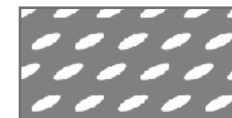
20mm x 1.7mm  
25mm x 2.5mm



**Square 5 Slots, 90°**  
(29% open area)

Hole sizes:

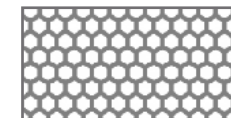
20mm x 1.7mm  
25mm x 2.5mm



**Elliptical**  
(20% open area)

Hole sizes:

15mm x 5mm



**Hexagonal**  
(52% open area)

Hole sizes:

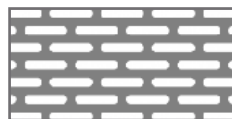
6mm x 6.9mm  
9mm x 10.4mm



**Single Slots Parallel**  
(40% open area)

Hole sizes:

20mm x 4mm  
25mm x 6mm



**Single Slots Staggered**  
(40% open area)

Hole sizes:

20mm x 4mm  
25mm x 6mm



**Cross Staggered**  
(46% open area)

Hole sizes:

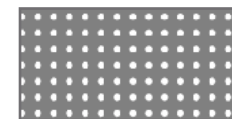
10mm x 10mm  
10mm x 6mm  
12mm x 5mm



**Angular Parallel**  
(24% open area)

Hole sizes:

17mm  
18mm



**Round Parallel**  
(variable open area)

Hole sizes:

1.3mm  
1.6mm  
3mm  
6.3mm  
19mm  
22.2mm  
31.7mm



**Round Staggered**  
(variable open area)

Hole sizes:

1.3mm  
2mm  
3mm  
4.7mm  
6.3mm  
9.5mm  
12mm  
15mm  
19mm  
22.2mm  
31.7mm



## 25\_Other finishes

With the help of our expert Design Team and in-house manufacturing, just about any type of Float panel finish is possible.



Fabric wrapped.



OSB, Raw, textured board



Glass panels.



Black aluminium frame and die cut panels.



## Product Technical Information

Everything you need to know about Float as a product. For more information or for technical drawings, please contact us.

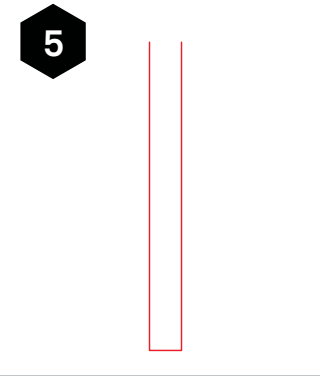
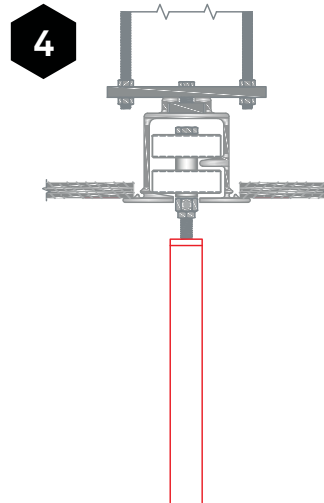
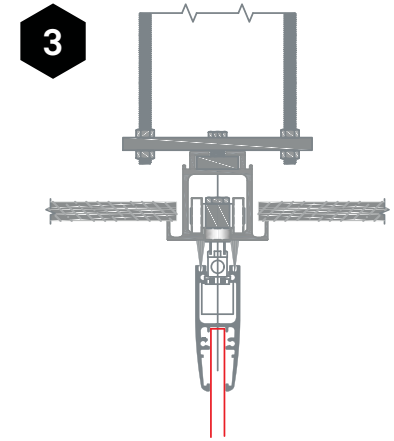
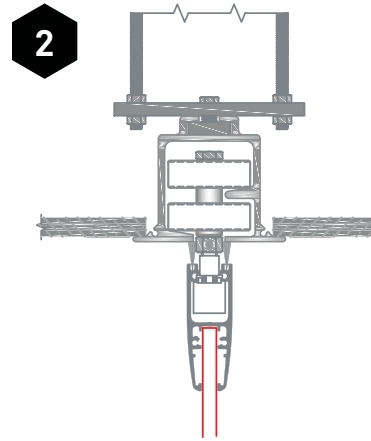
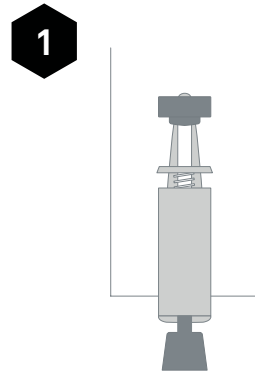
## 27\_Technical Info

If you wish to consult a member of our Design team, please contact us

	FLOAT		
	Float	Float Mellow	Float Framed
Panel thickness	24-50mm	24mm	45mm
Weight KG/M2	Depends on finish	6.25kg sq mtr	Depends on finish
Max. height	2800mm	2400mm	2800mm
Max. panel width	1200mm	1200mm	1200mm
Board type	Laminate, MFC, Glass, OSB or other finishes applied to MFC substrate	Polyester	Mesh, Drywipe, Moss, Laminates
Operable stop	Foot-operated compression	N/A	Foot-operated compression
Frame finish:	No frame	No frame	powder-coated aluminium
Track system	Aluminium TP	Aluminium TP	Aluminium TP

# 28\_Technical Details

- 1. Compression  
Foot Bolt
- 2. Twin Point
- 3. Single Point
- 4. Profileless  
Head Detail
- 5. Profileless  
Bottom Detail



## 29\_Standard Stacking Configs

**Config A**  
Twin-point,  
H-park

**Config B**  
Twin-point,  
Offset Stack

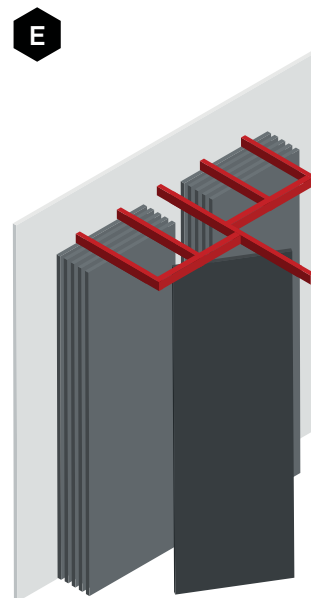
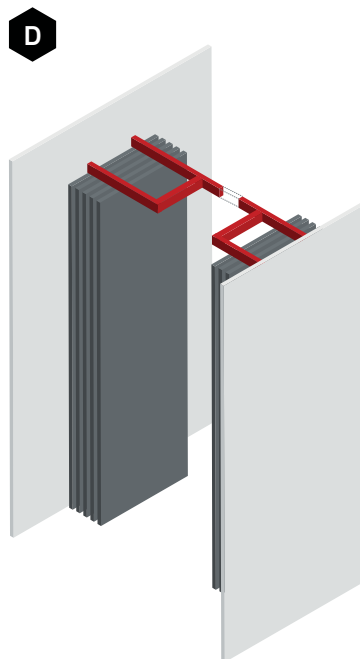
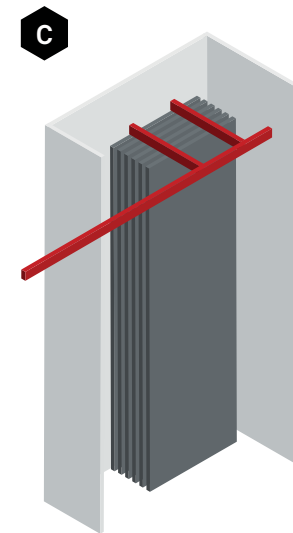
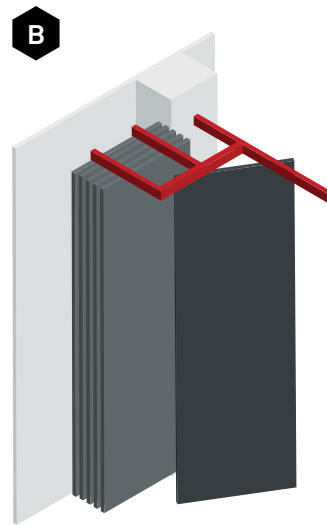
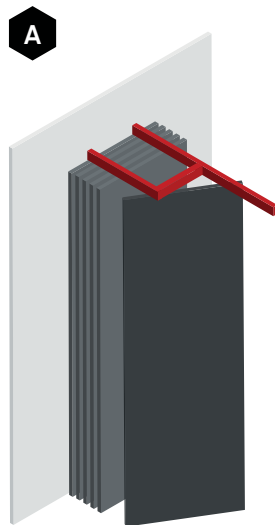
**Config C**  
Twin-point,  
Linear Stack

**Config D**  
Twin-point,  
H-park Split

**Config E**  
Twin-point,  
Split Offset Track

**Please note:**  
Panel thickness will  
vary depending on  
system type.

Other stacking options  
are available on  
request. Please contact  
Creatif for further  
details.



### 30\_Mix & Match Finish Options

Our expert in-house Design & Manufacture teams are able to work with you to bring together multiple finishes as part of the same panels to create something truly unique.



## 31\_Contact

### Details

T: +44 (0) 113 270 1239

F: +44 (0) 113 239 1672

E: info@creatif.org.uk

### Head Office

Unit 2 National Road  
Business Park,  
National Road,  
Leeds LS10 1TE

Visit our website to find out more...



[www.creatif.org.uk](http://www.creatif.org.uk)