



Solo Acoustic Operable Moving Walls (Manual Operation)

Operation & Maintenance Manual

www.creatif.org.uk

02_Contents

Thank you for choosing Solo by Creatif - the ultimate moving wall system in terms of acoustic integrity, achieving the very highest possible sound ratings.

This guide is designed to walk you through how to use the Solo moving wall system.

For technical drawings, please contact Creatif.

Page 03-07	Operation Guide
Page 08	Cleaning & Maintenance
Page 09	Contact

Servicing

Do you have a problem with your moving wall system or do you want to ask a question?

Email: service@creatif.org.uk

Guarantees

All materials were supplied by, or on behalf of, Creatif and manufactured in our factory.

All materials are guaranteed for 12 months from the date of installation, with the exception of component failure caused as a result of misuse or neglect.

03_Operation

Guide 1 of 5

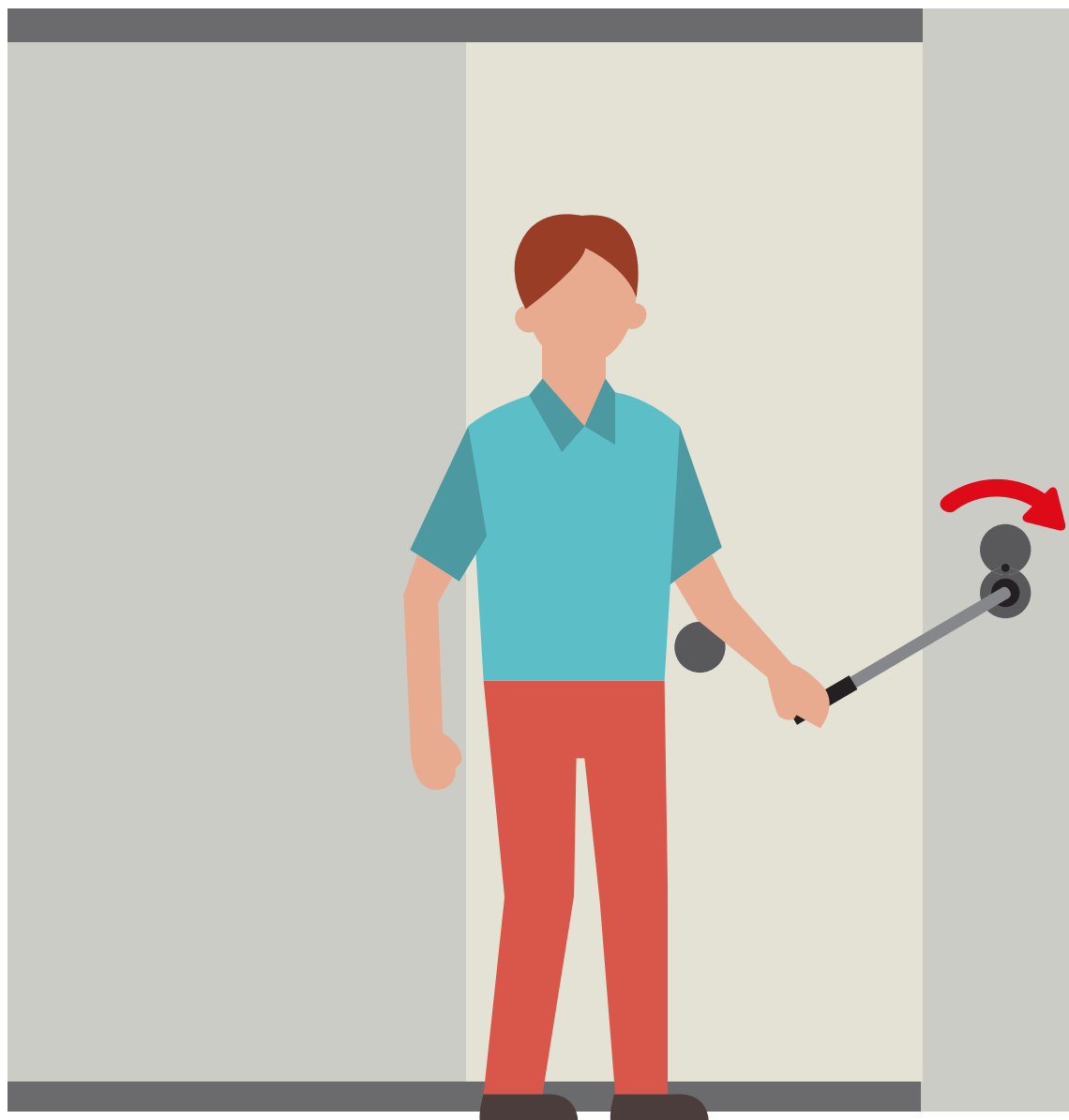
This guide assumes your system is closed (forming a wall). If your system is open (stacked), please complete this process in reverse order.

Step 1

First, locate the “Expanding Jamb” - this is the part of the Solo system that is attached to your fixed wall.

Insert your locking handle into the hole located behind the escutcheon (which rotates on a pin).

Once inserted, firmly turn the handle clockwise. You will hear the acoustic seals open, and a 60mm gap will appear between the expanding jamb and first panel of your set.



04_Operation Guide 2 of 5

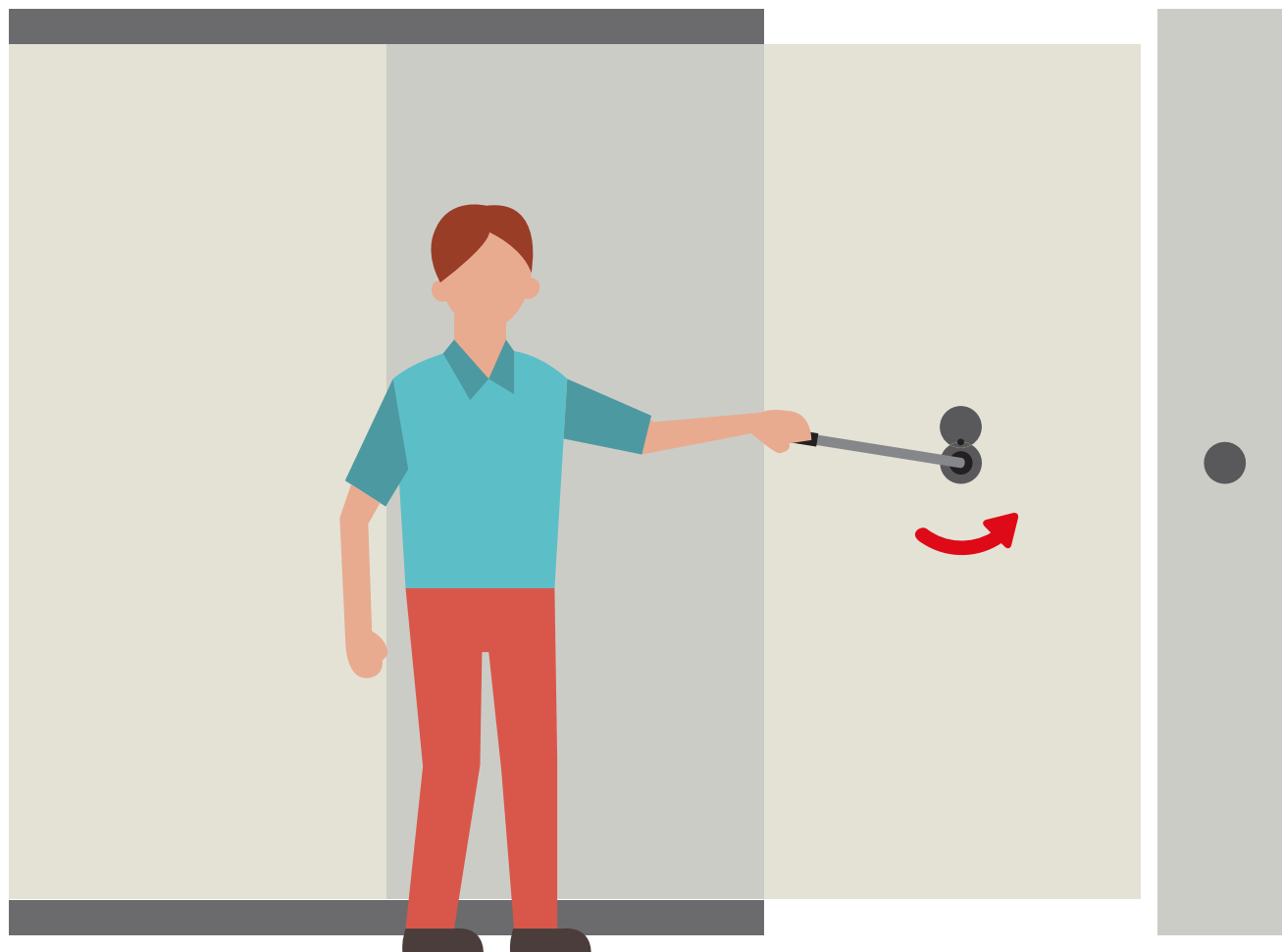
Step 2

Next, it's time to move the main panel.

Locate the only panel in your set which has an escutcheon (this will look identical to the escutcheon on the Expanding Jamb).

Release the top and bottom seals of the main panel by inserting the handle into the hole behind the escutcheon and turning counter-clockwise.

You should now hear the top and bottom acoustic seals (the black section of the wall between the top edge of the panel and ceiling, and the bottom edge of the panel and the floor) open.



05_Operation Guide 3 of 5

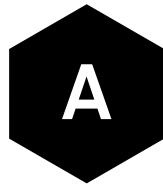
Step 3

You will now need to stack away your panel.

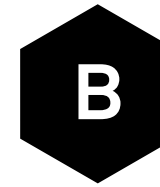
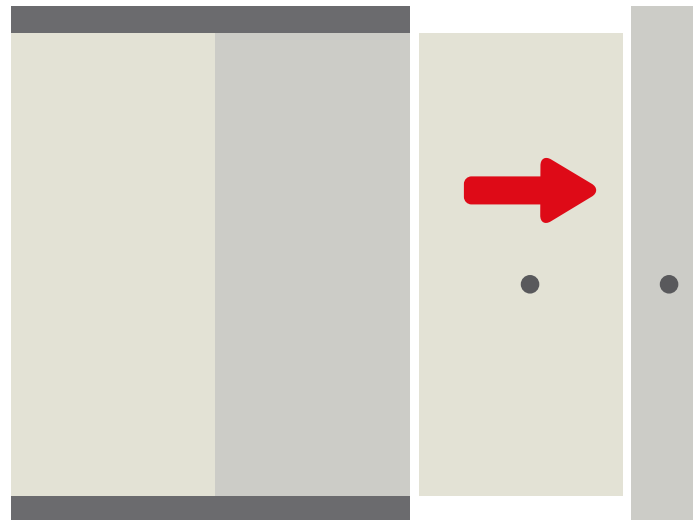
Using both hands, move the newly unlocked main panel a few centimetres away from the next fixed panel in the set, so you can see to the other side (see fig. A).

Now rotate the panel 90 degrees, and proceed to place it into the desired stacking area or designated stacking bay by moving it along the track (see fig. B).

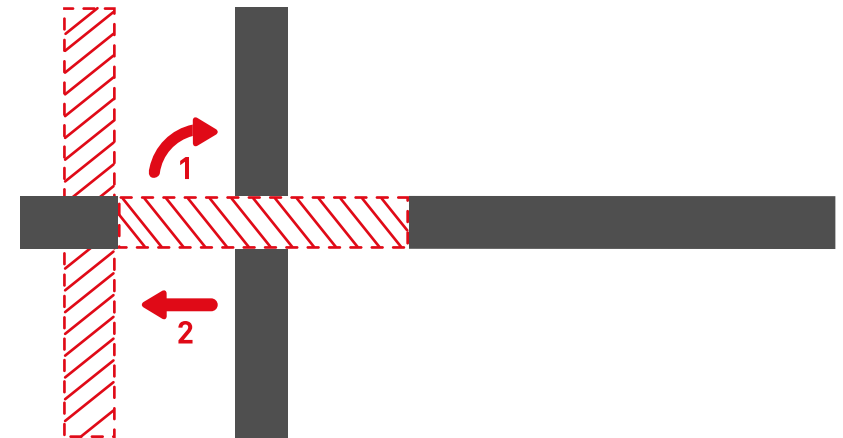
While the panels are in motion, take care not to slam them into any surfaces.



Move the panel



Rotate & stack (aerial view)



06_Operation Guide 4 of 5

Step 4

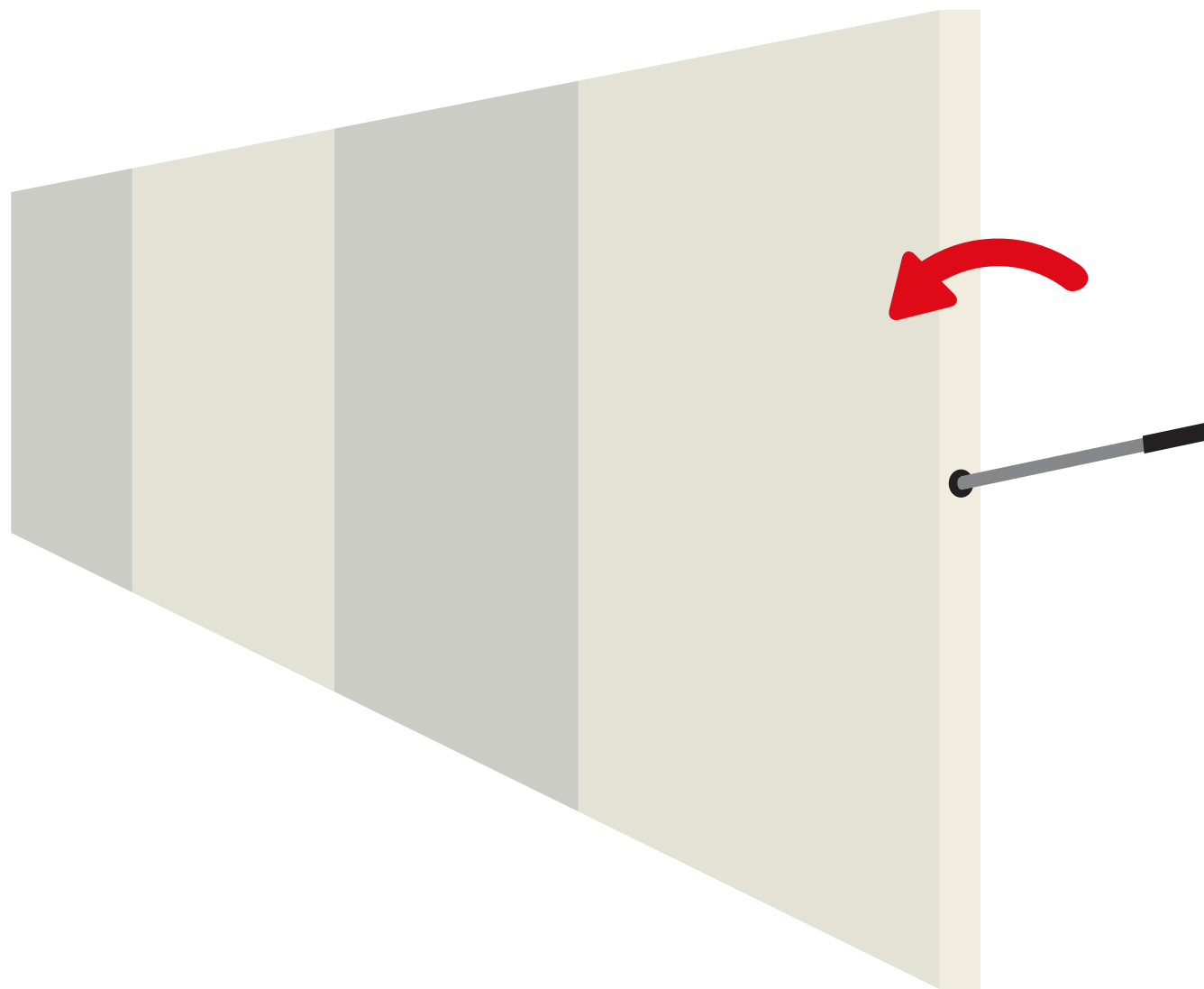
Locate the next panel you wish to move.

Insert the handle into the key hole which can be found on the side profile of the panel.

Once inserted, turn counter-clockwise to release. You will again hear the acoustic seals open.

Once again, using both hands; move the newly unlocked main panel a few centimeters away from the next fixed panel in the set, rotate the panel 90 degrees, and proceed to stack away.

Repeat this action for the remaining panels.



07_Operation Guide 5 of 5

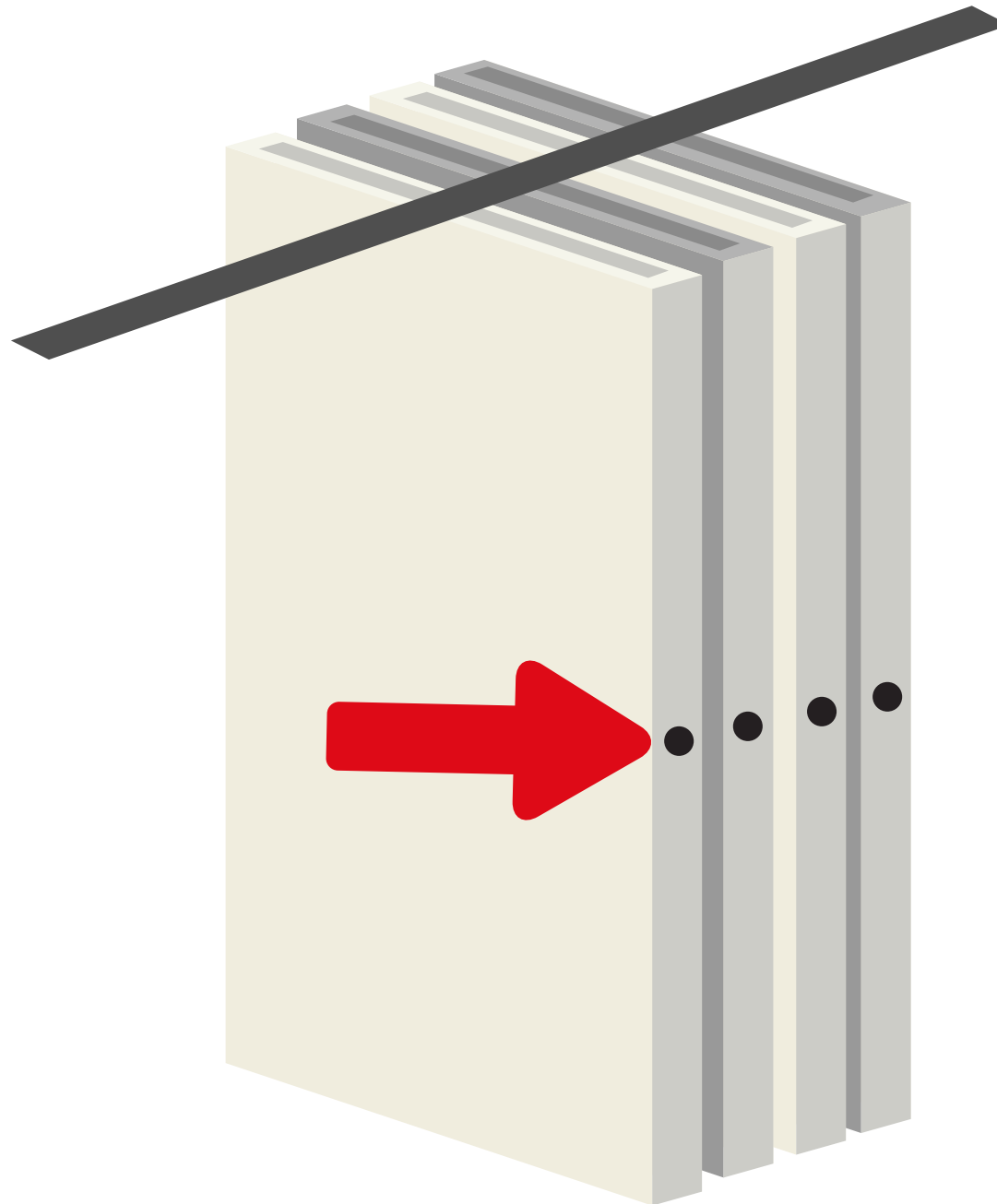
Step 4

Finally, you will need to “lock off” the last panel.

Once you’re happy with the new location of your panels, insert the handle into the hole located on the side profile of the last panel you stacked away.

Turn the handle clockwise to close the acoustic seal (on this set only) - the seals will act as a brake to stop any of the panels stacked away behind from moving around.

Complete this process in reverse order to close the system.



08_Cleaning & Maintenance

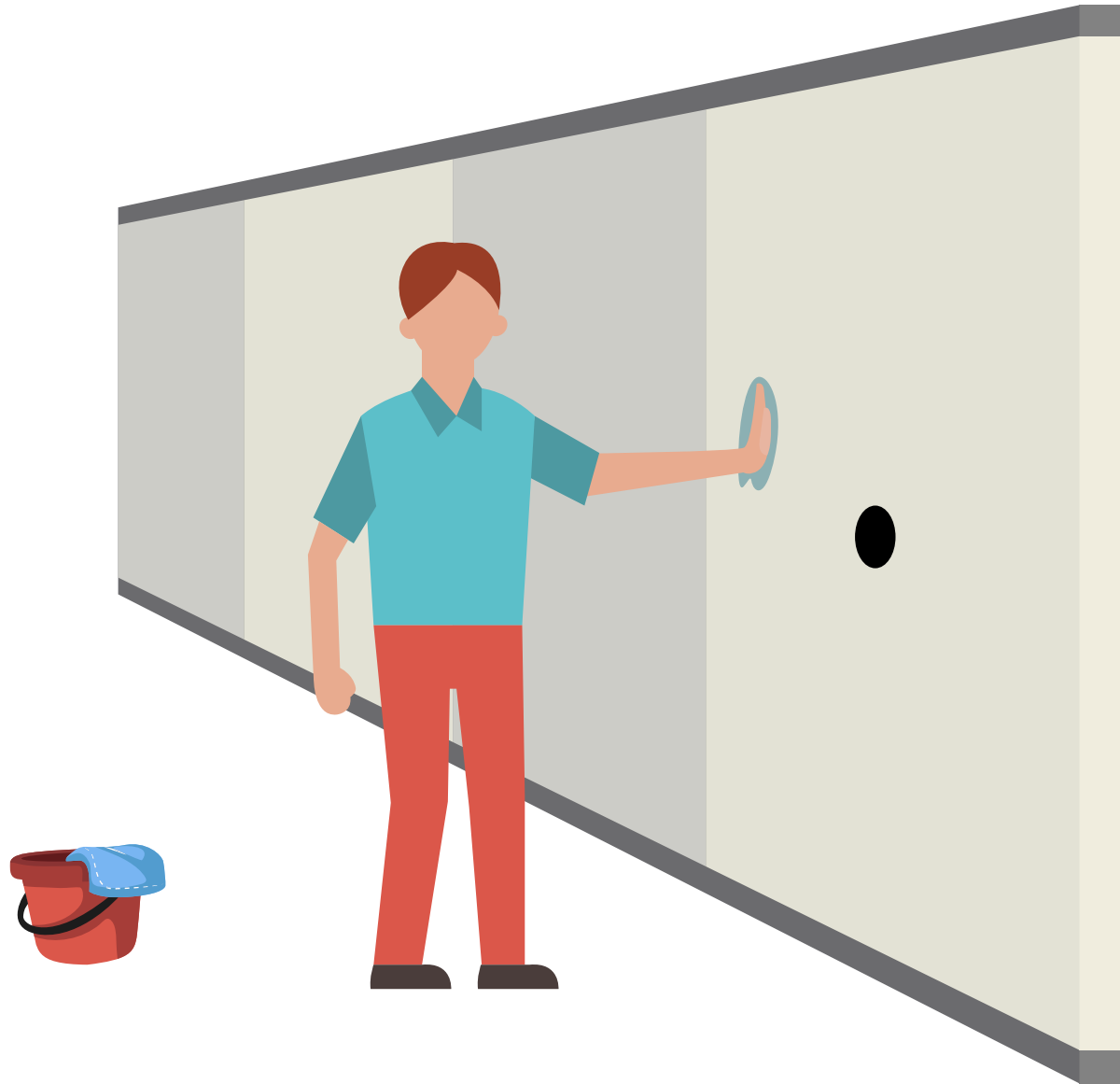
Solo requires very little attention, with the obvious exception of keeping the track free of dirt and objects.

All systems featuring panels with a standard finish can be cleaned with a damp cloth and dried with a dry cloth immediately after.

Side profiles and the acoustic seals can be cleaned with a damp cloth and, again, should be dried with a dry cloth.

We recommend that you avoid scrubbing and the use of bleach-based cleaning products.

For more information on a service contract, system usage or to activate your warranty, give us a call or send an email:
service@creatif.org.uk



10_Contact

If you have any questions about your moving wall system, or would like to find out more about our servicing packages, please get in touch:

T: +44 (0) 113 270 1239

E: service@creatif.org.uk

www.creatif.org.uk



**Do you have
a question?**

Want to discuss
servicing options?

Get in touch!